

Contourites along the Iberian continental margins: conceptual and economic implications



ESTEFANÍA LLAVE^{1*}, F. JAVIER HERNÁNDEZ-MOLINA²,
MARGA GARCÍA³, GEMMA ERCILLA⁴, CRISTINA ROQUE⁵,
CARMEN JUAN^{4,6}, ANXO MENA^{2,5,7}, BENEDICT PREU⁸,
DAVID VAN ROOIJ⁶, MICHELE REBESCO⁹,
RACHEL BRACKENRIDGE¹⁰, GLORIA JANÉ¹,
MARÍA GÓMEZ-BALLESTEROS¹¹ & DORRIK STOW¹⁰

¹*Instituto Geológico y Minero de España (IGME), Rios Rosas 23, 28003 Madrid, Spain*

²*Department Earth Sciences, Royal Holloway University of London (RHUL), Egham Hill, Egham, Surrey TW20 0EX, UK*

³*Instituto Andaluz de Ciencias de la Tierra (IACT-CSIC), Universidad de Granada, Avenida de las Palmeras 4, 18100 Armilla, Granada, Spain*

⁴*Centro de Investigaciones Marinas y Ambientales (CMIMA-CSIC), Paseo Marítimo Barceloneta, 37–49, 08003 Barcelona, Spain*

⁵*Divisão de Geologia e Georecursos Marinhos, Instituto Português do Mar e da Atmosfera (IPMA), Rua C do Aeroporto, 1749-077 Lisboa, Portugal*

⁶*Department of Geology and Soil Science, Ghent University, Krijgslaan 281 S8, B-9000 Gent, Belgium*


⁷*Departamento de Xeociencias Mariñas e Ordenación do Territorio, Universidad de Vigo, E-36310 Vigo, Pontevedra, Spain*

⁸*Chevron Corporation, 6001 Bollinger Canyon Road, San Ramon, CA 94583, USA*

⁹*OGS – Istituto Nazionale di Oceanografia e di Geofisica Sperimentale, Borgo Grotta Gigante 42/C, 34010 Sgonico, TS, Italy*

¹⁰*Institute of Petroleum Engineering, Heriot-Watt University, Third Gait, Edinburgh EH14 4AS, UK*

¹¹*Instituto Español de Oceanografía (IEO), C/Corazón de María 8, 28002 Madrid, Spain*

 EL, 0000-0001-7873-7211; FJH-M, 0000-0002-7483-144;
MG, 0000-0003-2632-6132; GE, 0000-0002-9709-2938;
CR, 0000-0002-2583-594X; CJ, 0000-0003-3752-4919;
DVR, 0000-0003-3633-3344; MR, 0000-0002-9492-4081;
RB, 0000-0002-0572-314X; MG-B, 0000-0002-0772-9211;
DS, 0000-0001-5082-7848

*Correspondence: e.llave@igme.es

Abstract: This work uses seismic records to document and classify contourite features around the Iberian continental margin to determine their implications for depositional systems and petroleum exploration. Contourites

From: McCLAY, K. R. & HAMMERSTEIN, J. A. (eds) 2020. *Passive Margins: Tectonics, Sedimentation and Magmatism*. Geological Society, London. Special Publications, **476**, 403–436.

First published online December 3, 2019, <https://doi.org/10.1144/SP476-2017-46>

© 2019 The Author(s). Published by The Geological Society of London. All rights reserved.

For permissions: <http://www.geolsoc.org.uk/permissions>. Publishing disclaimer: www.geolsoc.org.uk/pub_ethics

include depositional features (separated, sheeted, plastered and confined drifts), erosional features (abraded surfaces, channels, furrows and moats) and mixed features (contourite terraces). Drifts generally show high- to moderate-amplitude reflectors, which are cyclically intercalated with transparent layers. Transparent layers may represent finer-grained deposits, which can serve as seal rocks. High-amplitude reflectors (HARs) are likely to represent sandier layers, which could form hydrocarbon reservoirs. HARs occur on erosive features (moats and channels), and are clearly developed on contourite terraces and overflow features. Most of the contourite features described here are influenced by Mediterranean water masses throughout their Pliocene and Quaternary history. They specifically record Mediterranean Outflow Water, following its exit through the Gibraltar Strait. This work gives a detailed report on the variation of modern contourite deposits, which can help inform ancient contourite reservoir interpretation. Further research correlating 2D and 3D seismic anomalies with core and well-logging data is needed to develop better diagnostic criteria for contourites. This can help to clarify the role of contourites in petroleum systems.

The characterization of contourite features has been a critical area of research in marine geology over the past three decades due to their implications for stratigraphy, sedimentology, palaeoceanography, palaeoclimatology, sedimentary instability processes and energy resources (Rebesco *et al.* 2014). Studies have shown that contourites are common in deep marine environments, but remain poorly understood in terms of their composition, sedimentary processes, origin, sequence, lithology, seismic facies, petrophysical characteristics (porosity, permeability, etc.) and role in petroleum systems (Viana 2008; Stow *et al.* 2011a, b; Shanmugam 2012; Brackenzie *et al.* 2013; among others). Advances in understanding of contourites have yielded a clearer picture of their lateral and temporal variability, as well as their relationships with alongslope processes. Previous work has helped to formalize the terms 'contourite depositional system' (CDS) and 'contourite depositional complex' (CDC) (Hernández-Molina *et al.* 2003, 2008a, b; Rebesco & Camerlenghi 2008). Contourites, however, frequently occur interbedded or simultaneously deposited with sedimentary facies resulting from down-slope processes. These deposits represent mixed turbidite–contourite systems (Faugères *et al.* 1999; Rebesco & Camerlenghi 2008; Creaser *et al.* 2017). Mixed systems are common along continental margins where bottom currents rework and/or redistribute pre-existing gravitational deposits (Marchès *et al.* 2010; Brackenzie *et al.* 2013; Mulder *et al.* 2013). When down-slope processes dominate alongslope processes, gravitational deposits (such as turbidites) may overprint or inhibit the development of contourites. When strong alongslope currents dominate, turbidity currents may deviate and feed contourite drifts (e.g. Faugères *et al.* 1999; Mulder *et al.* 2003, 2006; Viana *et al.* 2007).

This paper follows the contourite drift classification criteria of Faugères *et al.* (1999) and Rebesco (2005). Sediment drifts are commonly bounded by and/or associated with erosional contourite features (such as contourite channels or moats). Compared to depositional features, these latter erosional features have generally received less attention and their

genetic relationships with oceanographic processes remain unclear (Nelson *et al.* 1993, 1999; Stow & Mayall 2000; Hernández-Molina *et al.* 2006, 2008a, 2015; Hernández-Molina *et al.* 2016c; García *et al.* 2009). Erosional contourite features are clearly identifiable in seismic reflection profiles, allowing large-scale interpretation (Faugères *et al.* 1999; Stow *et al.* 2002a, b, c; Hernández-Molina *et al.* 2008a, b, 2016a, b, c; Nielsen *et al.* 2008; Brackenzie *et al.* 2013; Llave *et al.* 2015; Calvin Campbell & Mosher 2016; Delivet *et al.* 2016; Gruetzner & Uenzelmann-Neben 2016; Kuijpers & Nielsen 2016; among others). In the past, some contourite deposits have been considered as potential (hydrocarbon) source rocks, but ones less likely to form reservoirs than turbidites (Pickering *et al.* 1989; Pickering & Hiscott 2016). Sediments that make up such contourite drifts are typically muddy but can reach substantial local thickness, and include well-sorted sands that themselves are thick and laterally extensive enough to play a role in deep-water petroleum systems. Recent studies have interpreted bottom currents as a crucial factor in hydrocarbon reservoir development because weak flows enable the accumulation of mud-rich deposits (such as contourites). These can serve as both cap rock (seals) or, with deeper burial, as potential source rocks or shale-gas reservoirs when adequately enriched in organic matter (up to 2 wt%). On the other hand, high-velocity flows may represent a mechanism for 'mature sand' accumulation in deep-water environments. These sands form excellent reservoir units (Enjorlas *et al.* 1986; Colella 1990; Mutti 1992; Shanmugam *et al.* 1993; Viana *et al.* 1998; Shanmugam 2006, 2012, 2013a, b; Stow & Faugères 2008; Viana 2008; Stow *et al.* 2011a, 2013b; Mutti & Carminatti 2012). Sandy contourites and related deposits with good lateral continuity and exposed to long-term effects of current winnowing may have greater textural maturity and better developed primary interstices than turbidites. Sandy contourites can thus present good petrophysical characteristics, including high values for porosity, permeability, and lateral and vertical transmissivity of fluids (Shanmugam 2008; Viana 2008).

In spite of the potential role they play in deep-water petroleum systems and, by extension, their economic significance, contourites and mixed-drift depositional systems are not well understood. In particular, the scientific literature on sandy contourites, including ancient analogues in outcrop, is sparse. Mixed-drift systems do not yet enjoy the benefit of well-defined interpretive models. Both of these could help refine and direct turbidite exploration.

Published seismic and sedimentological data from the Iberian continental margin have reported on the interrelationships of turbidite and contourite depositional systems, especially contourites within mixed turbidite–contourite systems (Mulder *et al.* 2003, 2006, 2008; Llave *et al.* 2006; Marchès *et al.* 2007; García *et al.* 2016). The Iberian margin is affected by several vigorous water masses interacting along upper and middle continental slopes, and by weaker water masses moving along the lower slope and abyssal plains (Hernández-Molina *et al.* 2011, 2016c) (Fig. 1). Each of these domains hosts extensive and complex contourite features of variable dimensions and sedimentary thicknesses that are often poorly understood in terms of their oceanographic/depositional contexts (Maestro *et al.* 2013; Llave *et al.* 2015). Along the Iberian margin, large volumes of sand have been efficiently transported, re-deposited or reworked by the persistent hydrodynamic regimes of the Gulf of Cadiz (Buitrago *et al.* 2001; Habgood *et al.* 2003; Llave *et al.* 2005; Hernández-Molina *et al.* 2006; Akhmetzhanov *et al.* 2007; Brackenridge *et al.* 2011, 2013). IODP Expedition 339 and other cores from a number of cruises furthered understanding of sand-rich contourite deposits by presenting a facies model for sandy contourites (Expedition 339 Scientists 2012; Hernández-Molina *et al.* 2013; Stow *et al.* 2013a; Brackenridge *et al.* 2018). This research also considered contourites' potential role in deep-water petroleum systems. A thorough record of these features as they occur around the Iberian margin can further understanding of both their scientific significance and their economic potential (e.g. Rebesco & Camerlenghi 2008; Hernández-Molina *et al.* 2011 and references therein).

This study provides a regional review of along-slope processes and their sedimentary features around the Iberian continental margin based on 2D seismic profiles from published and unpublished sources. This work also discusses sandy contourites and how these features can be used to interpret ancient contourite deposits and explore for petroleum in deep-water settings.

Data and methodology

This study interprets geophysical surveys of the Iberian continental margin. Surveys used acoustic techniques to develop a 2D vertical profile of the

structure underlying the seafloor at water depths of 200–5000 m. This study primarily reviews contourite features as characterized by methods and nomenclature described in Faugères *et al.* (1999), and further developed by Rebesco & Stow (2001) and Nielsen *et al.* (2008). Contourite morphologies developed at different depths and under the influence of multiple water masses are defined as 'contourite features' (CFs). Thickness is expressed in two-way travel time in seconds (TWT (s)).

The dataset was collected by several Spanish and international research projects, as well as by commercial petroleum exploration projects. Data were made available through the Geophysical Information System (Sistema de Información Geofísico – SIGEOF (<http://cuarzo.igme.es/sigeco/default.htm>), the Institut de Ciències del Mar–Consejo Superior de Investigaciones Científicas (CSIC) (<http://www.icm.csic.es/geo/gma/SurveyMaps/>) and the Instituto Português do Mar e da Atmosfera – IPMA (<http://www.ipma.pt>). Data were obtained by various seismic reflection methods described here. Low-resolution methods are commonly used for hydrocarbon exploration purposes. These methods record multi-channel seismic profiles penetrating several kilometres but provide comparatively low-resolution (>50 m) images. Moderate-resolution/penetration methods use air guns (Uniboom and Sparker) that penetrate from 100 m to 2 km with a resolution of 1 and 10 m (respectively). High-resolution/low-penetration seismic methods use 3.5 kHz echo sounders, TOPAS (topographical parametric sonar) and Parasound, which penetrate the upper few to tens of metres of the subsurface and record it at centimetre resolution. The various penetration depths and resolutions of these seismic survey systems record contourite features on different scales. Morphology and boundaries of the deposit are recorded at larger scales. The architecture of discrete internal depositional units is recorded at medium scales, and seismic facies are recorded at smaller scales. These features are referred to as first-, second- and third-order seismic elements in Nielsen *et al.* (2008).

A digital bathymetric model obtained from GEBCO (2003) and Zitellini *et al.* (2009) served as the base map used in the study. The *World Ocean Atlas 2012* (National Oceanographic Data Center 2012) provided the source data for the selected vertical hydrographic profiles.

Contourite features along the Iberian margin

The water masses around Iberia control alongslope sedimentation, and thus shape intermediate- and deep-water bathymetric features (Hernández-Molina *et al.* 2011 and references therein) (Fig. 1; Table 1). In

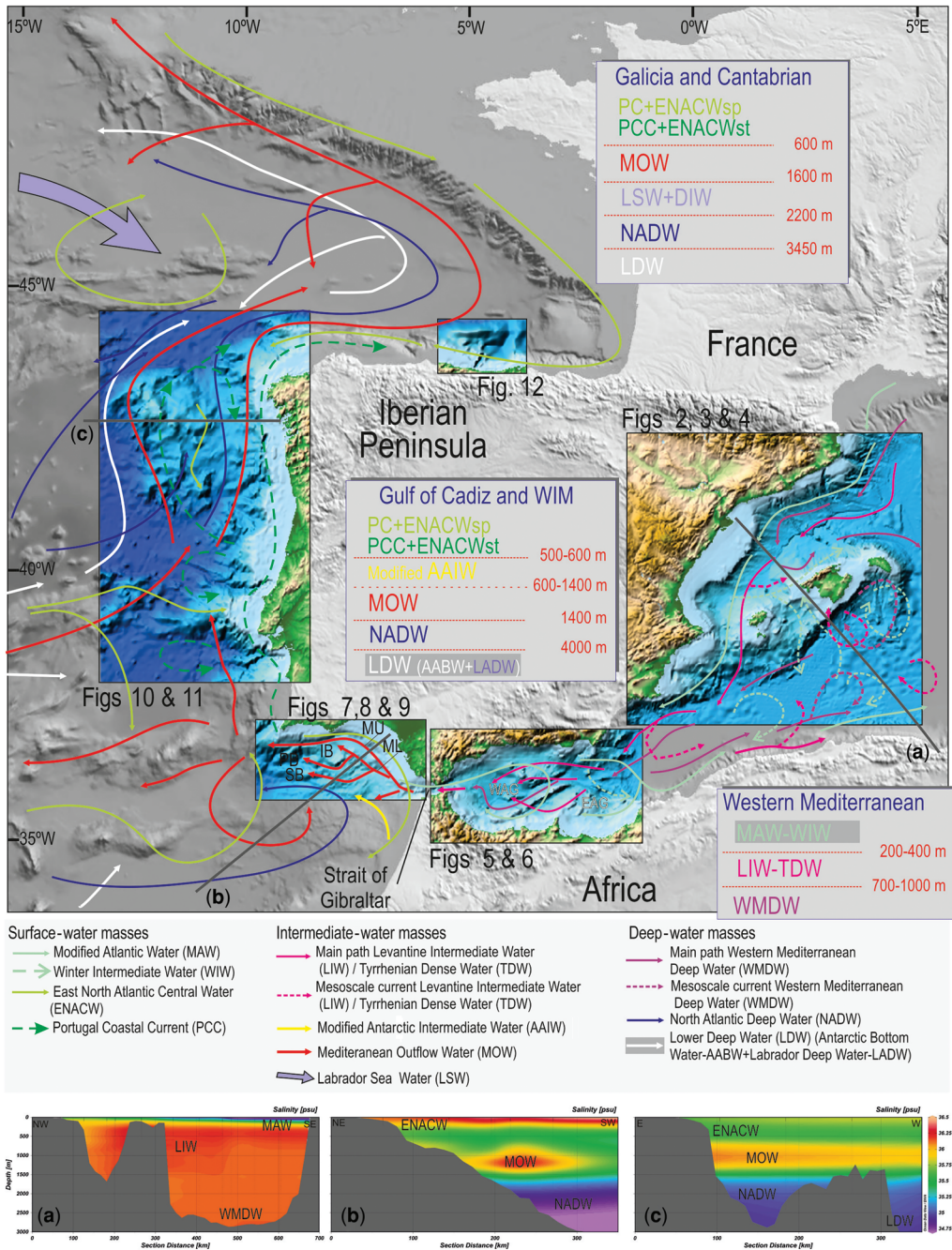


Fig. 1. Surficial-, intermediate- and deep-water circulation around the Iberian continental margin (modified from Hernández-Molina *et al.* 2011); digital bathymetric model obtained from GEBCO (2003) and Zitellini *et al.* (2009). Vertical hydrographic profiles: (a) east Iberian margin, (b) Gulf of Cadiz and (c) Galician margins (source data from the World Ocean Atlas 2012 (National Oceanographic Data Center 2012). Locations in the study areas are also shown.

Table 1. Acronyms of the main water masses present along the Iberian margin

<i>Mediterranean Sea</i>	
AW	Atlantic Water
MAW	Modified Atlantic Water
EAG	Eastern Alboran Gyres
WAG	Western Atlantic Gyre
LIW	Levantine Intermediate Water
WMDW	Western Mediterranean Deep Water
WIW	Western Intermediate Water
TDW	Tyrrhenian Dense Water
LMW	Light Mediterranean Waters
DMW	Dense Mediterranean Waters
<i>Gulf of Cadiz and West Iberia</i>	
AIW	Inflow of the Atlantic Water
PC	Portugal Current
PCCC	Portugal Coastal Counter Current
ENACW	Eastern North Atlantic Central Water
AAIW	Modified Antarctic Intermediate Water
MOW	Mediterranean Outflow Water
MU	Mediterranean Upper Core
ML	Mediterranean Lower Core
NADW	North Atlantic Deep Water
LDW	Lower Deep Water
LADW	Labrador Deep Water
AABW	Antarctic Bottom Water
<i>Galicia and Cantabrian</i>	
LSW	Labrador Sea Water

spite of many bottom-current measurements, the Iberian margin lacks long-term hydrodynamic records and has many areas with few or no measurements. Its mean recorded velocities are commonly low ($5\text{--}15\text{ cm s}^{-1}$), but certain water masses can travel across the seafloor at relatively high velocities, exceeding 80 cm s^{-1} and occasionally reaching almost 300 cm s^{-1} : for example, within the Strait of Gibraltar (Madelain 1970; Mélières *et al.* 1970; Ambar & Howe 1979; Iorga & Lozier 1999; Candela 2001). These water masses interact along the upper and middle continental slopes, and, with less intensity, along lower slope areas and the abyssal plain (Fig. 1).

Contourite features with large-scale dimensions and a range of sedimentary thicknesses occur at the following locations: the NE Iberian margin, Alboran Sea, Gulf of Cadiz CDS (well studied), western Iberian margin, Galician margin, Ortegal Spur, and Le Danois Bank or ‘Cachucho’. These features are complex and poorly understood. The following subsections summarize the main water masses shaping the Iberian margin and describe contourite features formed by their interaction with the seafloor.

Mediterranean Sea

Oceanographic setting. According to traditional definitions, the Mediterranean Sea hosts three main

water masses (Fig. 1; Table 1): Atlantic Water, Levantine Intermediate Water and Western Mediterranean Deep Water.

Atlantic Water (AW) or Modified Atlantic Water (MAW) forms due to the mixing of North Atlantic Surface Water, which enters through the Strait of Gibraltar at a velocity of approximately 1 m s^{-1} (Salat & Cruzado 1981; Gascard & Richez 1985). The MAW flows eastwards at a depth of 100–200 m and forms two anticyclonic gyres (Fig. 1): a quasi-permanent gyre in the western Alboran Basin (Western Alboran Gyre: WAG) and a semi-permanent gyre in the eastern Alboran Basin (Eastern Alboran Gyre: EAG) (e.g. Perkins *et al.* 1990; Millot 1999; Robinson *et al.* 2001). The energy of the WAG may exert an effect down to water depths of approximately 500–700 m (Cheney & Doblar 1982; Heburn & La Violette 1990; Perkins *et al.* 1990; Viúdez *et al.* 1998).

Levantine Intermediate Water (LIW) originates in the Strait of Sicily and flows westwards into the Western Mediterranean at depths of 200–600 m. After emerging from the Strait of Sicily, the LIW flows along the Iberian margin and into the central part of the Alboran Sea at velocities of up to 14 cm s^{-1} (Fig. 1).

Western Mediterranean Deep Water (WMDW) forms locally in the Alboran Basin and its surroundings during winter months, and generally flows westwards at water depths down to 600 m, although it can also reach depths of 2000 m (Fig. 1). Certain WMDW pulses can travel at velocities as high as 22 cm s^{-1} (Gascard & Richez 1985; Parrilla & Kinder 1987; Millot 1999; Fabres *et al.* 2002).

In recent studies of the Strait of Gibraltar and the nearby Alboran Sea, Millot (2009, 2014) proposed a more complex oceanographic structure and defined two additional water masses for this area: Western Intermediate Water (WIW: 100–300 m), situated between the AW and LIW; and Tyrrhenian Dense Water (TDW: variable water depth), situated between the LIW and WMDW (Fig. 1). Ercilla *et al.* (2016) categorized these five Alboran Sea water masses as light or intermediate-water masses (Light Mediterranean Waters (LMW): 100–600 m), and dense or deep-water masses (Dense Mediterranean Waters (DMW): $>275\text{ m}$).

Contourite features (CFs). The best-studied contourites in the Mediterranean Sea occur in the Alboran Sea. Evidence also indicates contourite deposition elsewhere along eastern margins of Iberia. Along the continental slope between Cap de Creus and Blanes Canyons (Fig. 2a; Table 2), two mounded, upward-prograding stratified drifts reach thicknesses of approximately 1 s and widths of 5 km at water depths of 1000–2300 m (Barcelona CFs). One of these occurs just south of La Fonera Canyon at

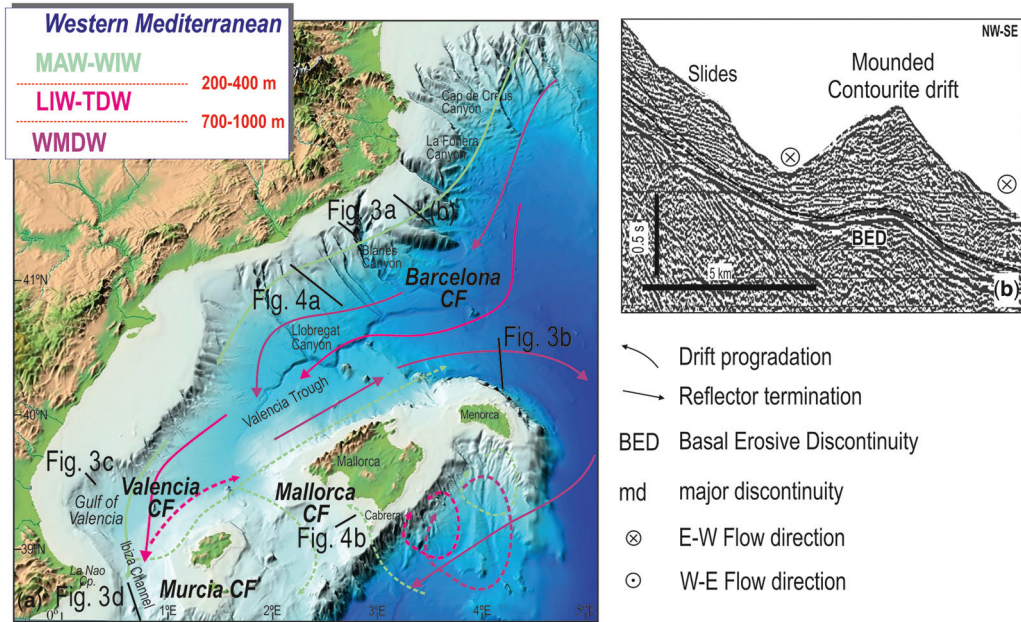


Fig. 2. (a) Digital bathymetric model of the NE Iberian margin, and the locations of the main water masses and seismic profiles. (b) Multichannel seismic profile showing a mounded drift example, as well as erosive features.

water depths of 1200–2300 m (Canals 1985), and another is located between the La Fonera and Blanes canyons at depths of 1000–1300 m (Fig. 2b). This second drift has not been analysed for specific contourite features but is similar to the one studied by Canals (1985).

Upslope, prograding, mounded, elongated and separated drifts (hereafter referred to simply as separated drifts) have been described from several localities. An isolated separated drift south Blanes Canyon reaches about 0.8 s in thickness and 6 km in width (Fig. 3a). A broad separated drift north of Menorca occurs on the lower slope at depths down to 2000 m. This drift is approximately 150 km long, 0.5 s thick, 25 km wide and reaches 100 m elevation above the seafloor (Menorca CFs) (Fig. 3b). This drift also exhibits sediment waves and a contourite moat (200 m deep and 5 km wide) along its seaward margin (Mauffret 1979; Velasco *et al.* 1996). Sediment waves also occur along the Gulf of Valencia continental margin (Valencia CFs). One of these situated along the outer continental shelf exhibits wavelengths of 400–800 m and heights of 2–4 m. A second example at 250–850 m water depth exhibits wavelengths of 500–1000 m and wave amplitudes of 2–50 m (Ribó *et al.* 2016). This latter field of sediment waves is developed along a possible prograding plastered drift approximately 0.5 s thick (Fig. 3c; Table 2). Several separated drifts have also been

identified developed locally around seamounts in this sector (Fig. 3d).

Several plastered drifts with an upslope-prograding stacking pattern have also been reported. These include 10 km-wide plastered drifts with thicknesses ranging from 1 to 0.5 s, and developed at water depths of 400–800 and 1100–1400 m (Barcelona CFs) (Fig. 4a), and mounded, plastered, shallow-water contourites (Mallorca CFs) in a slope canyon near western Cabrera Island (SW of Mallorca) at water depths of 250–600 m (Fig. 4b; Table 2). A field of sediment waves is also present at the surface (Vandorpe *et al.* 2011; Lüdmann *et al.* 2012). Several plastered drifts of approximate 0.5 s thickness also occur around seamounts in the Valencia Trough at depths of between 500 and >1100 m (Valencia CFs), in the southern Ibiza Channel, and along the SE Iberian margins between depths of 600 and 900 m (Murcia CFs) (Fig. 3d; Table 2).

Contourites in the Alboran Sea display a great variety of both depositional and erosional features that range from a few to several tens of kilometres in length (Alboran CDS) (Fig. 5a). Their morphological and sedimentary characteristics have recently been described by Ercilla *et al.* (2016) and Juan *et al.* (2016). Depositional features predominate and are categorized as different types of drifts (Ercilla *et al.* 2002, 2016; Palomino *et al.* 2011; Juan *et al.* 2012, 2013, 2014, 2016). The largest drifts are plastered and sheeted types (Figs 5b, c & 6a; Table 2).

Plastered drifts occur along the continental slopes of both the Iberian and African margins between water depths of 235 and 575–1000 m, respectively. These drifts appear in seismic images as upslope overlapping stratified facies that pinch out in both upslope and downslope directions (Fig. 5b, c). The sheeted drifts occur along the base of the central Iberian slope, and in the western and southern Alboran basins at water depths below approximately 500 m. These appear as parallel-stratified seismic layers with a sub-tabular geometry beneath a relatively flat seafloor (Fig. 6a). Several small plastered and sheeted drifts occur locally along the flanks and tops of seamounts (Fig. 5c). Smaller drifts include separated (Figs 5b & 6b), channel-related (Fig. 6c) and mounded, confined drifts (Fig. 6d) (Palomino *et al.* 2010, 2011; Ercilla *et al.* 2016; Juan *et al.* 2012, 2013, 2014). Separated drifts occur along the westernmost upper and lower African slopes, and at the foot of structural seamounts and diapirs (Fig. 6b). In seismic images, they show overlapping stratified facies with internal discontinuities that display a mounded geometry. Channel-related drifts make up part of the seafloor within the Alboran Trough, appearing in the corridor between the Xauen Bank and the African slope. Channel-related drifts consist of isolated irregular, stratified layers scattered within the channel floor (Fig. 6c). Confined drifts, situated between structural highs, display a mounded morphology, which consists of internally stratified layers (Fig. 6d).

The erosional contourite features are located primarily along the Alboran margin, and consist of moats, scarps and furrows (Ercilla *et al.* 2016; Juan *et al.* 2016). The moats are mostly associated with separated and confined drifts. A few incipient moats also occur along the walls of the structural highs, where the slope exhibits changes in bathymetric patterns (Figs 5b & 6b). Scarps are narrow, steep erosional surfaces roughly parallel to the margin, which occur in association with landward flanks of terraces and other basal features along the slope. Scarps mark the transition between the basin's physiographical/oceanographic provinces. Furrows occur as linear features incised into steep, distal erosional escarpments of the African margin, near the Strait of Gibraltar. Extensive terraces represent mixed depositional and erosional features. These form the tops of plastered drifts along the continental slope. Terraces along the African margin are more pronounced (Fig. 5b). Terraces transition seawards into an onlapping, concordant surface.

Gulf of Cadiz

Oceanographic setting. The modern hydrodynamic setting of the Gulf of Cadiz is dominated by the exchange of water between the Atlantic Ocean and

Mediterranean Sea through the Strait of Gibraltar. This gateway allows egress of warm, saline Mediterranean Outflow Water (MOW), which flows into the Atlantic Ocean, and the overlying inflow of the Atlantic Water into the Mediterranean Sea (Lacombe & Lizeray 1959; Ochoa & Bray 1991; Baringer & Price 1999; Iorga & Lozier 1999; Nelson *et al.* 1999; Potter & Lozier 2004; Lozier & Sindlinger 2009) (Fig. 1; Table 1). The MOW is an intermediate-water mass composed of waters originating in the Mediterranean Basin (Ambar & Howe 1979; Bryden & Stommel 1984; Bryden *et al.* 1994; Millot *et al.* 2006). The water mass accelerates through the narrow Strait of Gibraltar, reaching local velocities as high as 300 cm s^{-1} (Ambar & Howe 1979; Mulder *et al.* 2003), and moves northwestwards along the middle continental slope of the Gulf of Cadiz. This MOW flow occurs under the AIW and above the North Atlantic Deep Water (NADW). The AIW consists of the North Atlantic Superficial Water (NASW), from the surface down to a depth of approximately 100 m, and the Eastern North Atlantic Central Water (ENACW), which flows between depths of 100 and 600 m. In the Gulf of Cadiz, the Modified Antarctic Intermediate Water (AAIW) (Louarn & Morin 2011) circulates above the MOW (Hernández-Molina *et al.* 2014b). The underlying NADW flows southwards from the Greenland–Norwegian Sea region at depths greater than 1500 m (Ambar *et al.* 1999; Baringer & Price 1999; Serra *et al.* 2005).

In the Gulf of Cadiz, the MOW flow is controlled by the complex morphology of the continental slope. Flow is locally enhanced where salt tectonics have created diapiric ridges oblique to the MOW flow direction (Fig. 1). These ridges are partially responsible for splitting the MOW into numerous distinctive cores (Fig. 1), although vertical layering within the main MOW core has also been proposed as an alternative controlling mechanism (Sannino *et al.* 2007; Millot 2009; Copard *et al.* 2011). The main water cores are the Mediterranean Upper Core (MU) and the Mediterranean Lower Core (ML), each of whose branches displays unique salinity, temperature and average velocity (Madelain 1970; Zenk 1975; Ambar & Howe 1979; Gründlingh 1981; Borenäs *et al.* 2002; Serra *et al.* 2005) (Fig. 1). The MU flows alongslope along the southwestern Iberian margin at depths of 500–800 m, and part of its flow is captured by the Portimão Canyon along the Algarve margin (Marchès *et al.* 2007). The ML generally flows northwestwards at an average velocity of $20\text{--}30 \text{ cm s}^{-1}$ (Llave *et al.* 2007), with the major part of flow concentrated west of 7° W (Madelain 1970). At this longitude, a branch detaches from the south side of the ML and flows SW. At approximately $7^\circ 20' \text{ W}$, the ML divides into three distinct branches that generally flow NW: the Southern

Table 2. *Acoustic facies, morphology and location of the main contourite features along the Iberian margin*

Main depositional features	Acoustic facies	Shape/dimensions	Location
<i>Mediterranean Sea: Barcelona CF</i>			
Mounded drifts	Prograding upslope	High mound shape, c. 5 km wide, a few hundreds of metres of relief	Middle–lower slope
Separated drifts	Prograding upslope	High mound shape, c. 6 km wide, a few tens of metres of relief	Middle–lower slope
Plastered drifts	Prograding upslope–downslope	Low mound shape, 10 km wide, a few tens of metres of relief	Upper–Middle slope
<i>Mediterranean Sea: Valencia and Balearic Islands CF</i>			
Plastered	Prograding upslope–downslope	Low mound shape, 10 km wide, a few tens of metres of relief	Middle slope
<i>Mediterranean Sea: Murcia CF</i>			
Plastered	Prograding upslope–downslope	Low mound shape, 10 km wide, a few tens of metres of relief	Middle slope
<i>Mediterranean Sea: Alboran CDS</i>			
Plastered drifts	Prograding upslope–downslope	Low to high mound shape, up to a few hundreds of kilometres long (<300 km), 5.5–40 km wide, tens to a few hundreds of metres of relief	Large drifts: Spanish and Moroccan slopes Small drifts: seamounts flanks, Spanish base-of-slope
Sheeted drifts	Aggrading sub-parallel stratified facies	Subtabular geometry; < 100 km long, 15 to 50 km wide	Large drifts: Spanish base-of-slope and sub-basins Small drifts: Alboran Ridge, seamounts tops
Channel-related drifts	Aggrading and prograding downwards	Low mound shape. c. 10 km long, <5 km wide	Alboran Trough
Mounded confined drifts	Prograding downwards	High mound shape; a few to tens of kilometres long and wide, 100–300 m of relief	Marginal shelf banks

Separated drifts	Prograding upslope	Low to high mound shape; <40 km long, 20 km wide, a few tens of metres of relief	Moroccan slope and shelf-break scarp; locally at the foot of seamounts and diapirs
<i>Atlantic: Gulf of Cadiz CDS</i>			
Plastered drifts	Prograding and aggrading downwards	Low mound shape; c. 10 km long, 5 km wide, a few metres of relief	Upper–middle slope
Separated drifts	Prograding upslope	High mound shape; 90 km long, 10–20 km wide, 150–200 m of relief	Middle and lower slope
Sheeted drifts	Aggrading sub-parallel stratified facies	Subtabular geometry; hundreds of kilometres long, tens of kilometres wide	Middle slope
<i>Atlantic: Western Iberian Margin CDS</i>			
Mounded drift	Prograding upslope	Low mound shape; c. 10 km long, c. 10 km wide, a few metres of relief	Middle–lower slope
Separated drifts	Prograding upslope	High mound shape; 5 km long, 5 km wide, a few hundreds of metres of relief	Middle–lower slope; around structural high continental rise
<i>Atlantic: Galicia and Ortegal CDS</i>			
Plastered drifts	Prograding–aggrading upslope–downslope	Low mound shape, a few kilometres long, tens to a few hundreds of metres of relief	Middle–lower slope; at the base if structural highs slope – abyssal plain
Separated drifts	Prograding upslope	Low to high mound shape; 5–22 km long, 1–10 km wide, a few tens to a few hundreds of metres of relief	Middle–lower slope
<i>Atlantic: Le Danois CDS</i>			
Plastered drifts	Prograding upslope–downslope	Low mound shape, 10–20 km long, c. 6 km wide, a few metres of relief	Upper southern slope of Le Danois Bank
Separated drifts	Prograding upslope	High mound shape; 10–45 km long, 3–10 km wide, a few tens of metres of relief	Middle slope

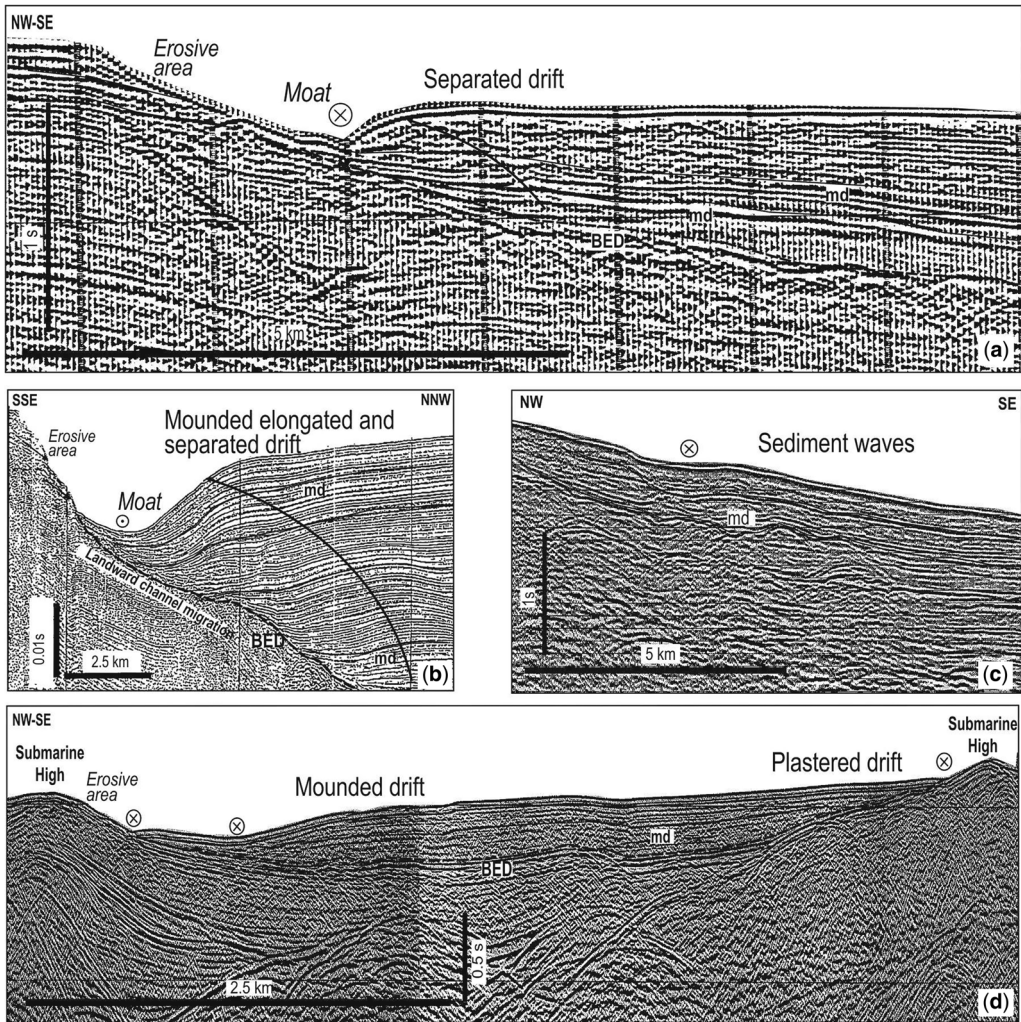


Fig. 3. (a) Multichannel and (b) sparker seismic profile (modified from Velasco *et al.* 1996) showing mounded separated drifts and moats. (c) Multichannel seismic profile where sediment waves are developed on a plastered drift. (d) Multichannel seismic profile showing mounded and plastered drifts, as well as erosional features around submarine highs. For the locations of the seismic profiles see Figure 2. BED, Basal Erosive Discontinuity; md, major discontinuity.

Branch (SB), the Principal Branch (PB) and the Intermediate Branch (IB) (Fig. 1). Portimão Canyon and Cape St Vincent also create a series of eddies, referred to as meddies due to their MOW origins (Ambar *et al.* 2002, 2008; Serra *et al.* 2005).

Contourite features. Erosional features are common in the Strait of Gibraltar, where high bottom-current velocities prevent deposition (Kelling & Stanley 1972; Stanley *et al.* 1975; Serrano *et al.* 2005). Esterras *et al.* (2000) identified several large channels likely to be associated with MOW circulation as

the dominant contourite features. A few isolated plastered drifts also occur along the northern continental slope (Fig. 7a, b).

Beyond where the MOW exits the Strait of Gibraltar, its interaction with the middle slope of the southwestern Iberian margin has produced one of the most extensive and complex contourite depositional systems ever described. This feature is referred to as the Gulf of Cadiz CDS (Fig. 7; Table 2) (e.g. Madelain 1970; Kenyon & Belderson 1973; Gonthier *et al.* 1984; Nelson *et al.* 1999; Stow *et al.* 2002a, b, c; Habgood *et al.* 2003;

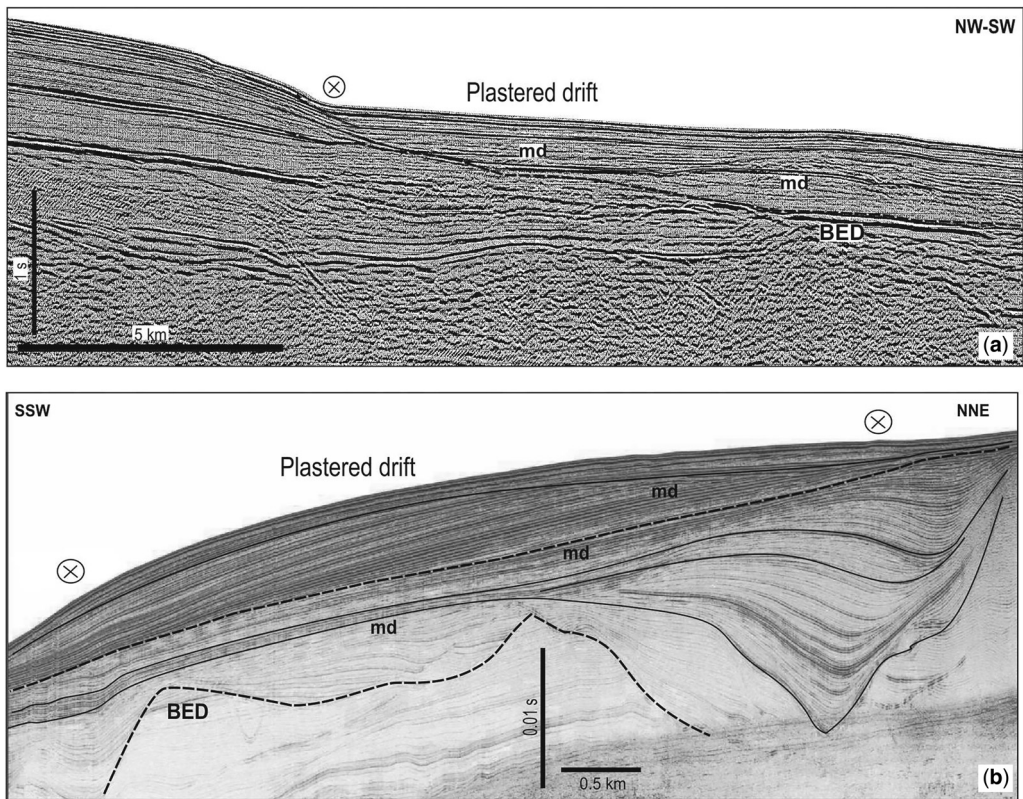


Fig. 4. (a) Multichannel and (b) sparker seismic profile (modified from [Vandorpe et al. 2011](#)) showing plastered drifts. For the locations of the seismic profiles see [Figure 2](#). BED, Basal Erosive Discontinuity; md, major discontinuity.

[Hernández-Molina et al. 2006](#); [Mulder et al. 2006](#); [Hanquiez et al. 2007](#); [Marchès et al. 2007](#); [Roque et al. 2012](#); [Brackenridge et al. 2013](#); [Llave et al. 2015](#) and references therein). The main depositional features are sediment wave fields, sediment lobes, mixed drifts, plastered drifts, separated drifts and sheeted drifts. The major erosional features are contourite channels, furrows, marginal valleys and moats ([García et al. 2009](#)). All of these features occur at specific locations along the margin, and their distributions correspond to five morphosedimentary sectors within the CDS: Sector 1 includes proximal scours and ribbons; Sector 2 includes overflow sediment lobes; Sector 3 includes channels and ridges; Sector 4 includes contourite deposition; and Sector 5 includes submarine canyons ([Hernández-Molina et al. 2003, 2006](#); [Llave et al. 2007](#)). The development of each of these five sectors through time is related to an overall systematic deceleration of the MOW along the margin, with localized acceleration due to its interaction with irregularities along the seafloor. The middle slope of the Gulf of

Cádiz is a bathymetrically complex area composed of mixed contourite features. This slope hosts four relatively flat contourite terraces with gradients of less than 0.5° at average depths of 500, 675, 750 and 850 m ([García et al. 2009](#); [Hernández-Molina et al. 2014b](#)). These terraces are bounded by relatively steep risers with gradients of 1.5° – 3° . Terraces form by both depositional and erosional processes.

Four sets of separated drifts have been described at water depths of 500–700 m along the Algarve margin: the Faro-Albufeira, Portimão, Lagos and Sagres drifts ([Table 2](#)). The Faro-Albufeira drifts are the most extensive and best developed. The Álvarez Cabral moat restricts these features to the upper slope. The drifts display asymmetrical shapes and sigmoidal-oblique, prograding stacking patterns ([Fig. 7c](#)). These drifts rise 150–200 m above the adjacent moat axis and surrounding deposits, and grade southwards into the Faro and the Bartolomeu Dias sheeted drifts, where the seafloor is smooth and almost flat ([Fig. 7d](#)). The Portimão and Lagos

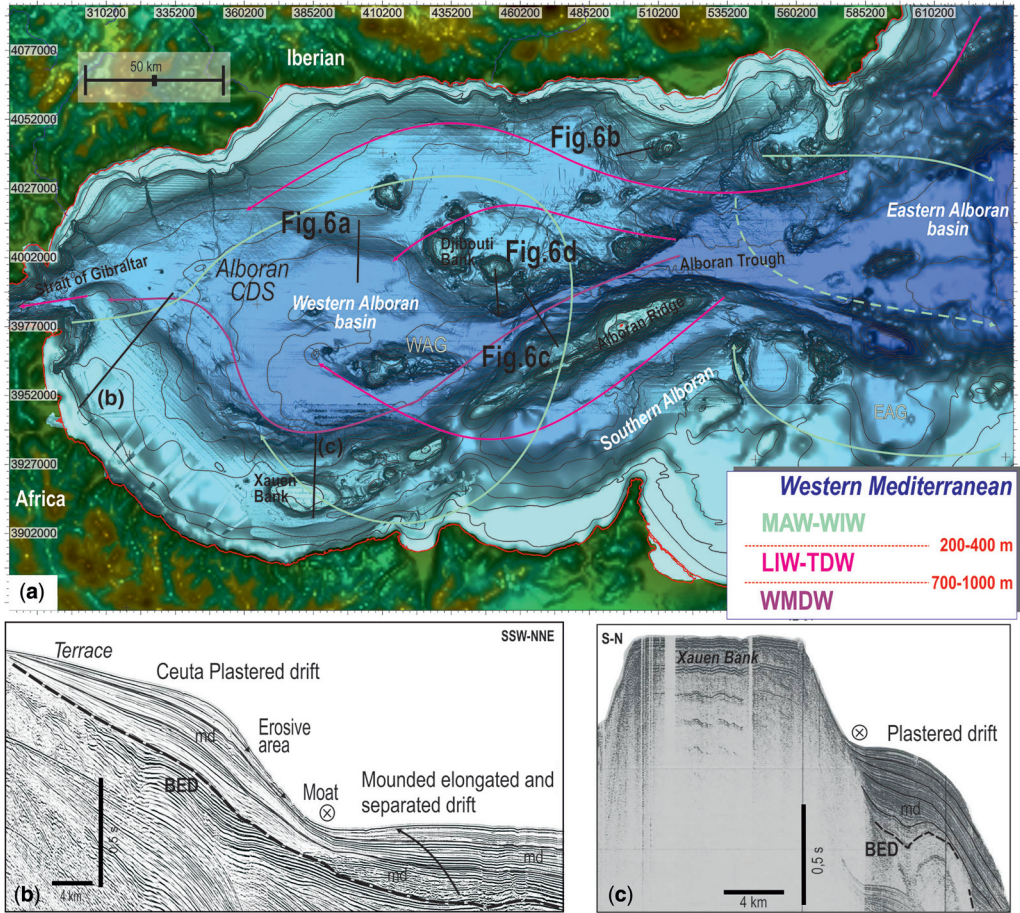


Fig. 5. Map of the Alboran Sea continental margin and the locations of the main contourite features based on (a) digital bathymetric data, and (b) airgun and (c) sparker seismic profiles (modified from Juan *et al.* 2012, 2013; Ercilla *et al.* 2016) showing examples of plastered and mounded and separated drifts, as well as erosive features. BED, Basal Erosive Discontinuity; md, major discontinuity.

drifts extend approximately 50 km from the Portimão Canyon but are separated by the Lagos Canyon. These display a smooth mounded morphology and are categorized as sheeted drifts (Hernández-Molina *et al.* 2003; Marchès *et al.* 2007, 2010). However, Roque *et al.* (2012) reported that the Lagos Drift grades from a sheeted drift near the Lagos Canyon to a plastered drift near the San Vicente high and finally to a separated drift. The Sagres Drift occurs at the transition between the southern and western Portuguese margins.

Sheeted drifts, with an aggrading stacking pattern and gentle morphology, occur between water depths of 600 and 1600 m in the contourite depositional and submarine canyons sectors (Vannay & Mougénot 1981). These were deposited across hundreds of kilometres, over which they are crossed by diapiric

ridges, deformed and eroded by large contouritic channels of Sector 3 (channels and ridges sector) (Fig. 8a–c) (García 2002; Mulder *et al.* 2002, 2003; Habgood *et al.* 2003; Hernández-Molina *et al.* 2003, 2006; Llave 2003; Llave *et al.* 2007).

Extensive bedforms include ripple marks, sand ribbons and sediment waves (Fig. 8d). Longitudinal mounded drifts (Fig. 9a) are well developed in a NW–SE direction in Sector 1 (proximal scours and ribbons sector) and in Sector 2 (overflow sediment lobes sector) (Hernández-Molina *et al.* 2006; Llave *et al.* 2007).

Composite erosional features occur along the Guadalquivir Bank. Along with numerous diapiric highs (isolated and ridge-form), these include four types of submarine valleys (moats, channels, marginal valleys and furrows) in Sector 3 (García

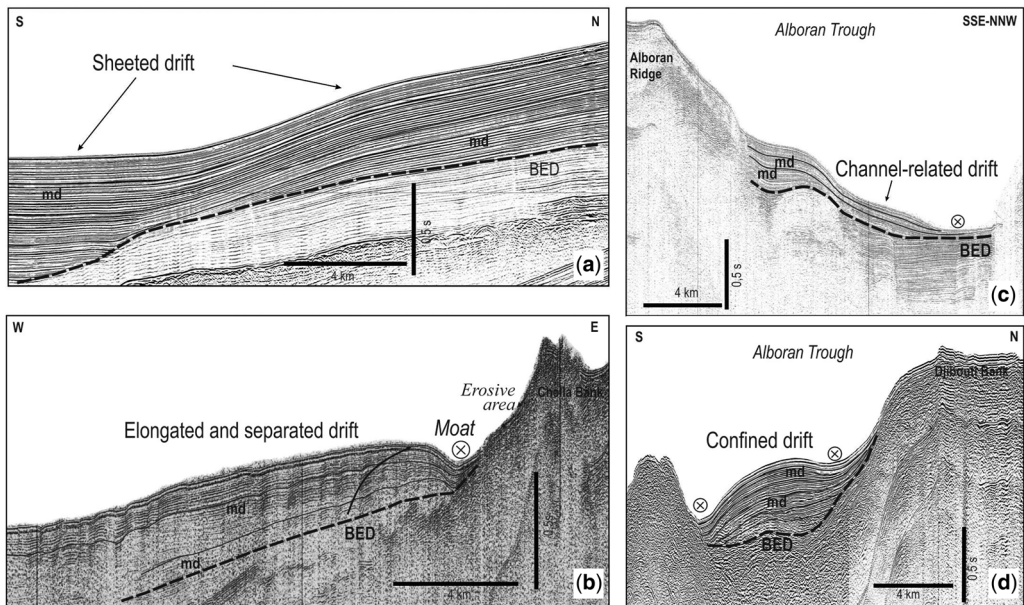


Fig. 6. (a) Airgun seismic profile showing an example of sheeted drift. (b) Airgun seismic profile showing an example of a channel-related drift. (c) Sparker seismic profile showing a mounded separated drift and moat. (d) Airgun seismic profile showing a confined drift (modified from Juan *et al.* 2012, 2013; Ercilla *et al.* 2016). For the locations of the seismic profiles see Figure 5. BED, Basal Erosive Discontinuity; md, major discontinuity.

2002; Hernández-Molina *et al.* 2003, 2006; García *et al.* 2009) (Fig. 9). The main erosional features along the middle slope of the central Gulf of Cadiz (Sector 3) include five major contourite channels (Fig. 8a–c). These occur along the southern flanks of the diapiric ridges and the Guadalquivir Bank. They include (from north to south) the Diego Cao, Huelva, Gusano, Guadalquivir and Cadiz Contourite channels (García *et al.* 2009). Different channels assume different dimensions but all display sinuous trends in the downslope to alongslope directions. The Cadiz and Guadalquivir channels (Fig. 8a) represent the largest features (1 and 12 km wide, respectively, more than 100 km long, and up to 130 m deep). Marginal valleys are unique erosional features located along NW sides of the diapiric ridges and isolated diapirs within the channels and ridges sector (Fig. 9e). These features exhibit irregular orientations but a locally sinuous morphology with a predominantly NE–SW trend (García *et al.* 2009). Their incision depths can exceed 250 m at some localities. The most prominent example of these features in the Gulf of Cadiz is the Alvarez Cabral contourite moat (Fig. 7c), which is associated with the Faro-Albufeira mounded drifts (Sector 4) (Gonthier *et al.* 1984; Llave *et al.* 2001; García 2002; Stow *et al.* 2002b; Hernández-Molina *et al.* 2003, 2006; Marchès *et al.* 2007). This moat (80 km long and 3.5–11 km wide) incises the base of the Algarve

margin's upper slope and trends WSW, parallel to the slope.

Sector 1, located at water depths of between 500 and 1000 m, is where the majority of the erosional features occur. This locality hosts abrasive surfaces (Fig. 9b) and several NW–SE-trending erosional scours (Fig. 9c) formed across an extensive area (90 km long and 30 km wide) (Kenyon & Belderson 1973; Habgood 2002; Hernández-Molina *et al.* 2003, 2006). This sector also hosts two main channels (Fig. 9a) (Hernández-Molina *et al.* 2014b). The southern channel forms due to WSW-trending erosion from the Camarinal Sill and, at 3–4 km in width, represents the most significant erosional feature near the Strait of Gibraltar. The northern channel is obscured by infill near the Strait but becomes more distinct towards the NW, where it joins the Cadiz and Guadalquivir contourite channels (Hernández-Molina *et al.* 2014b). Both southern and northern channels host an associated mounded drift along the seaward side of the channel and numerous small oblique furrows (Fig. 9a) (Hernández-Molina *et al.* 2014b). Several reports have interpreted furrows in the overflow sedimentary lobe sector (Sector 2) as erosional features related to MOW dynamics and gravitational processes (Habgood *et al.* 2003; Mulder *et al.* 2003; Hanquiez *et al.* 2007; García *et al.* 2009). The best-developed furrow is the Gil Eanes furrow (Fig. 9d), situated at water depths of

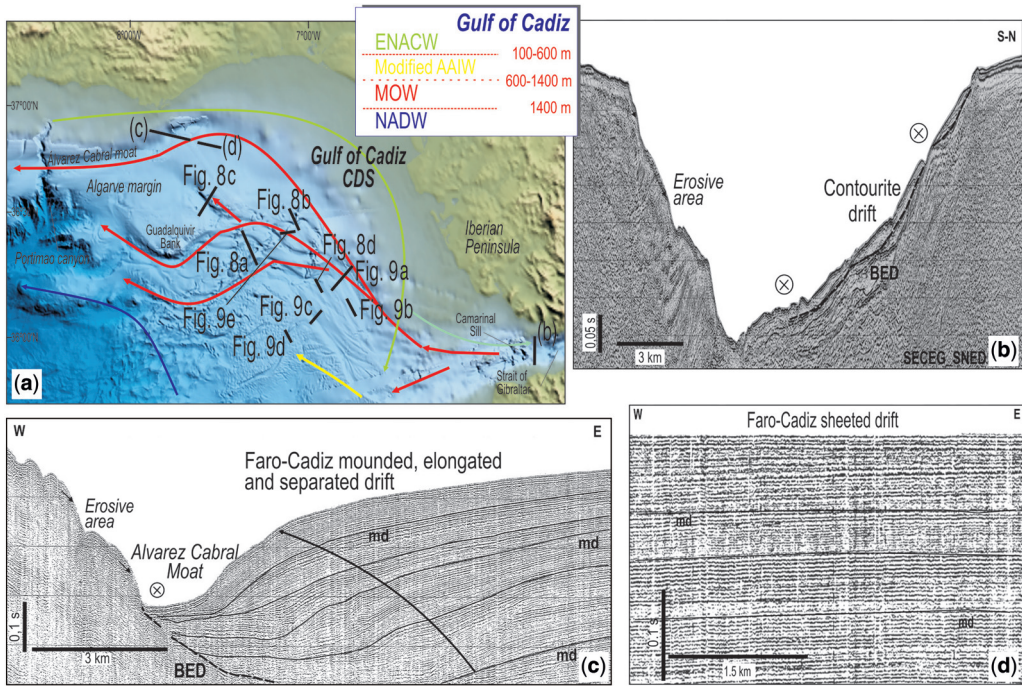


Fig. 7. (a) Digital bathymetric model of the Gulf of Cadiz continental margin and the locations of the main water masses. (b) Airgun seismic profile showing contourite drifts close to the Strait of Gibraltar. (c) & (d) Sparker seismic profiles showing mounded elongated and separated drift, and its basinward prolongation as sheeted drift (modified from Llave *et al.* 2001). BED, Basal Erosive Discontinuity; md, major discontinuity.

between 900 and 1200 m. Kenyon & Belderson (1973) first described this feature, while Habgood *et al.* (2003), Hanquiez *et al.* (2007) and García *et al.* (2009) published subsequent descriptions. The furrow is approximately 50 km long and has a width of 0.8–1.7 km, a sinuous trend, and erosional incision of up to 90 m.

West Iberia

Oceanographic setting. Four main water masses flow along the western Iberian margin at different depths (Fig. 1; Table 1). As the main shallow currents, (1) the Portugal Current (PC) flows southwards, while the Portugal Coastal Current (PCC) flows towards the north (Fiúza *et al.* 1998; Pérez *et al.* 2001; Martins *et al.* 2002; Peliz *et al.* 2005; Varela *et al.* 2005). The ENACW (2) of subtropical origin extends down to water depths of 600 m (McCartney & Talley 1982; Fiúza 1984; Pollard & Pu 1985; Ambar & Fiúza 1994; Fiúza *et al.* 1998; Pérez *et al.* 2001) and moves north from about 200–300 m. A component of ENACW of sub-polar origin moves south from about 300–400 m (Ambar & Fiúza 1994; Fiúza *et al.* 1998). After exiting the Gulf of Cadiz, the MOW (3) splits into three

principal branches: a main branch flowing northwards, a second branch flowing westwards and a third branch flowing southwards towards the Canary Islands before veering westwards (Ambar & Howe 1979; Iorga & Lozier 1999; Slater 2003). The northern branch flows along the middle slope of the Portuguese margin towards the Galician margin and the Bay of Biscay. This branch includes two distinct cores centred at water depths of 800 m and nearly 1200 m. Along the Oporto continental slope, the MOW mixes with the ENACW flowing at depths of between 250 and 540 m. At approximately 42° N, the MOW bifurcates intermittently into two branches (Mazé *et al.* 1997). Of these, one branch flows west of the Galicia Bank plateau and the other flows north along the continental slope of the Iberian Peninsula (Iorga & Lozier 1999; González-Pola 2006). The deep-water masses (below 2000 m water depth) of the western Iberian margin consist of the southwards-flowing NADW and the northwards-flowing Lower Deep Water (LDW) (4) (van Aken 2000). This LDW forms primarily from the mixing of the deep Antarctic Bottom Water (AABW) and the Labrador Deep Water (LADW) (Le Floch 1969; Botas *et al.* 1989; Haynes & Barton 1990; Pingree & Le Cann 1990; McCartney 1992;

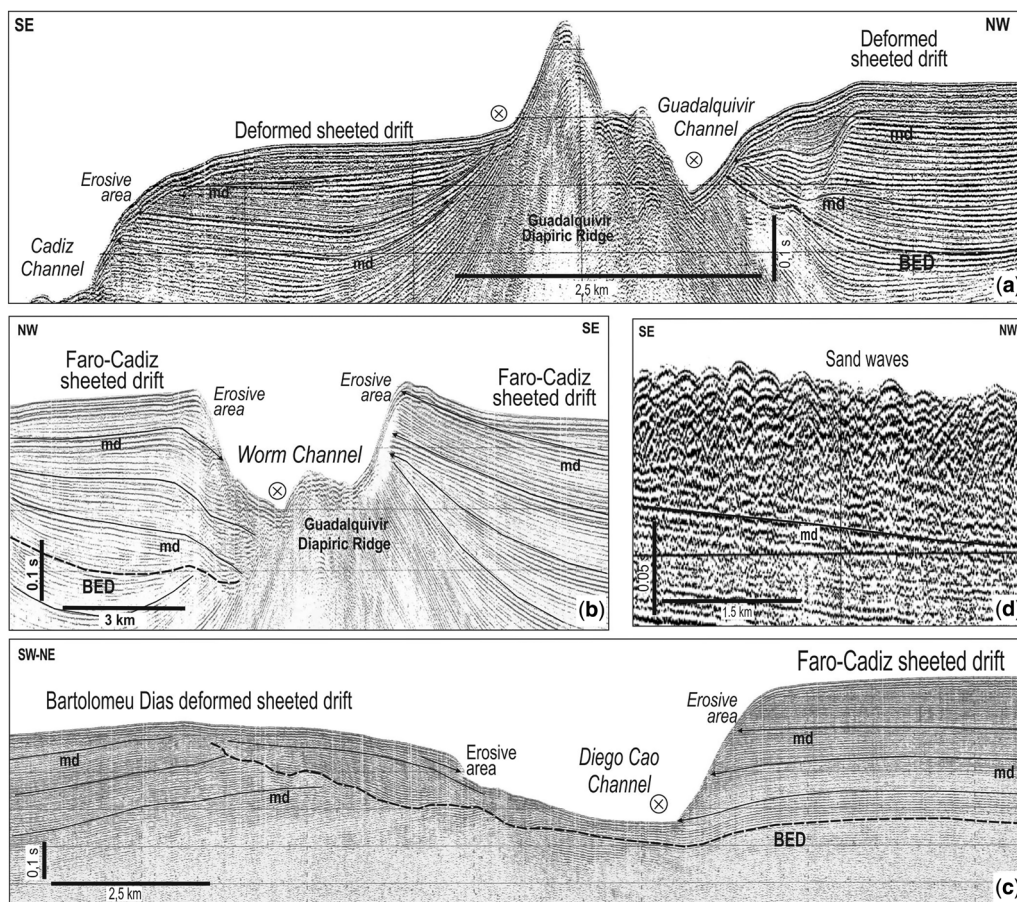


Fig. 8. (a)–(c) Sparker seismic profiles showing deformed sheeted drifts, as well as contourite channels around diapiric ridges. (d) Sparker seismic profile showing sand waves (modified from Llave *et al.* 2001; Hernández-Molina *et al.* 2006, 2014b; García *et al.* 2009). For the locations of the seismic profiles see Figure 7. BED, Basal Erosive Discontinuity; md, major discontinuity.

Van Aken 2000; McCave *et al.* 2001; Valencia *et al.* 2004).

Contourite features. The Sines Drift (a separated drift) represents the main contourite depositional feature of western Iberia. Mougenot (1989) first identified this feature as a contourite based on its general mounded morphology and wavy seismic patterns (Fig. 10a, b; Table 2). The Sines Drift is bounded by two of the Portuguese margin's major canyons: the Setúbal Canyon to the north and the San Vicente Canyon to the south (Fig. 10a). Formed by MOW circulation, the drift is an elongated, plastered sedimentary body formed below 750 m water depth along the gentle ($c. 0.5^\circ$) north–south-trending continental slope of the Alentejo margin (AM) (Fig. 10b). Roque *et al.*, (2015) recently discovered an extensive area (approximately 52 km long and 34 km wide)

of the Sines Drift affected by slope failure and mass wasting.

Recent reports have documented additional local contourite features occurring around structural highs and topographical irregularities associated with the circulation of either the MOW (300–2000 m water depth) or LDW (>2000 m water depth). Roque *et al.* (2015) recently identified a new separated drift offshore of Aveiro on the continental rise at a water depth of approximately 2500 m (Fig. 10c; Table 2). Neves *et al.* (2009) reported evidence of a contourite between water depths of 2300 and 3000 m reaching approximately 1.5 s thickness and 2.5 km width. This contourite drift is separated from a structural high by a moat (Fig. 10c). Large-scale sediment waves also appear in high-resolution seismic reflection data (Fig. 10d), along with localized syndepositional deformation and primary

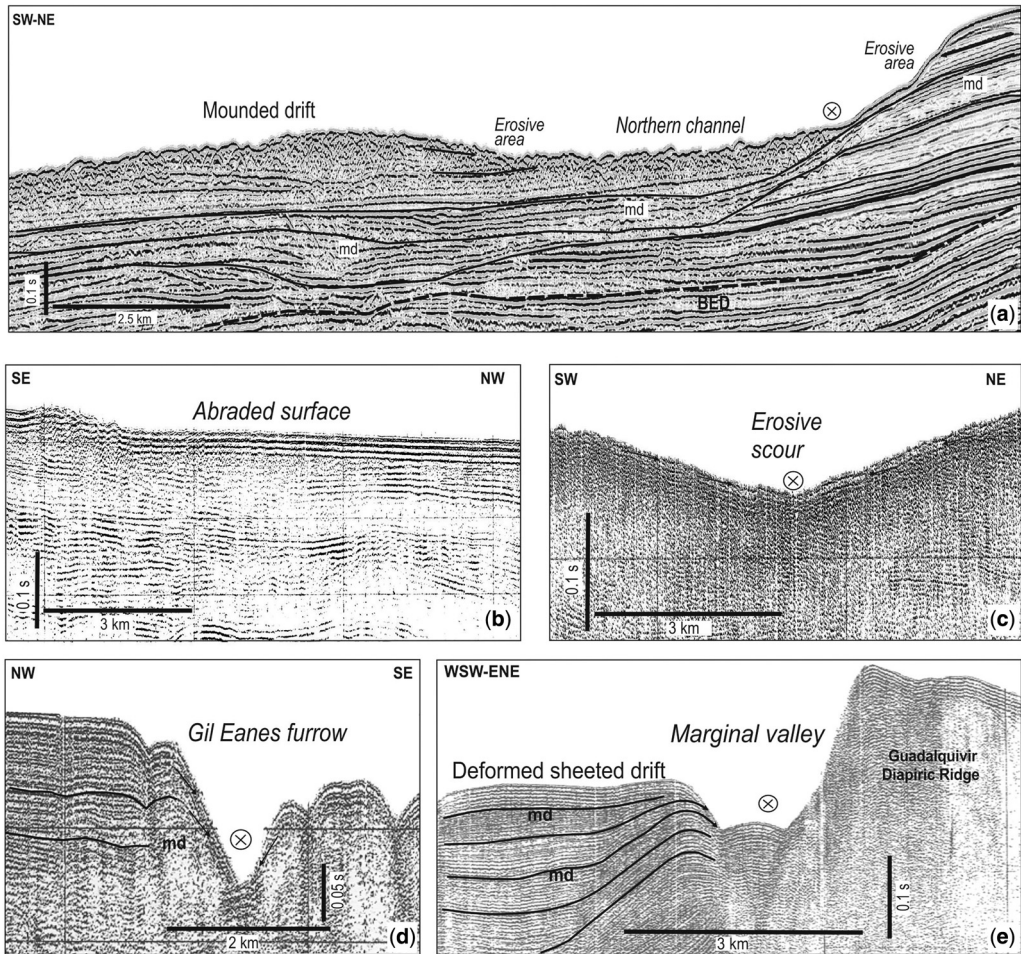


Fig. 9. (a) Airgun seismic profile where mounded drifts and contourite channels are described. (b)–(e) Sparker seismic profiles showing examples of contourite erosional features such as an abraded surface, a furrow and a marginal valley (modified from Llave *et al.* 2001; Hernández-Molina *et al.* 2006, 2014b; García *et al.* 2009). For the locations of the seismic profiles see Figure 7. BED, Basal Erosive Discontinuity; md, major discontinuity.

faulting within contourite drift strata (Alves *et al.* 2000, 2003).

Clear examples of both depositional (plastered drift, separated drift, sediment waves) and erosional (terraces, moats, furrows) features occur along the Galician continental margin and rise (Galicia Bank CFs) (Ercilla *et al.* 2006, 2008b, 2009, 2011; Bender *et al.* 2012; Hanebuth *et al.* 2015; Llave *et al.* 2018; Collart *et al.* 2018). The plastered drifts occur as low-relief mounds of a few kilometres in length, and tens to a few hundred metres in thickness. Their internal structure as revealed by high- to very-high-amplitude acoustic reflections highlights well-stratified, aggradational–progradational seismic features of good lateral continuity (Fig. 10e;

Table 2). Plastered drifts along the continental slope occur: (i) on the northwestern flank (2100 m water depth); (ii) along the northern scarp (1600 m water depth); (iii) at the base of certain structural highs (between 1500 and 4980 m deep) within the Galicia Bank plateau (Ercilla *et al.* 2011); and (iv) along the distal part of the Ortegal marginal platform (OMP) between water depths of 700 and 1100 m (Fig. 10e) (Jané *et al.* 2012; Llave *et al.* 2013, 2018). These drifts display smooth and terraced morphology (Ortegal CDS), a morphology which contrasts the numerous adjacent submarine canyons incised into the seafloor.

Major separated drifts occur at four locations. The first location lies along the lower continental

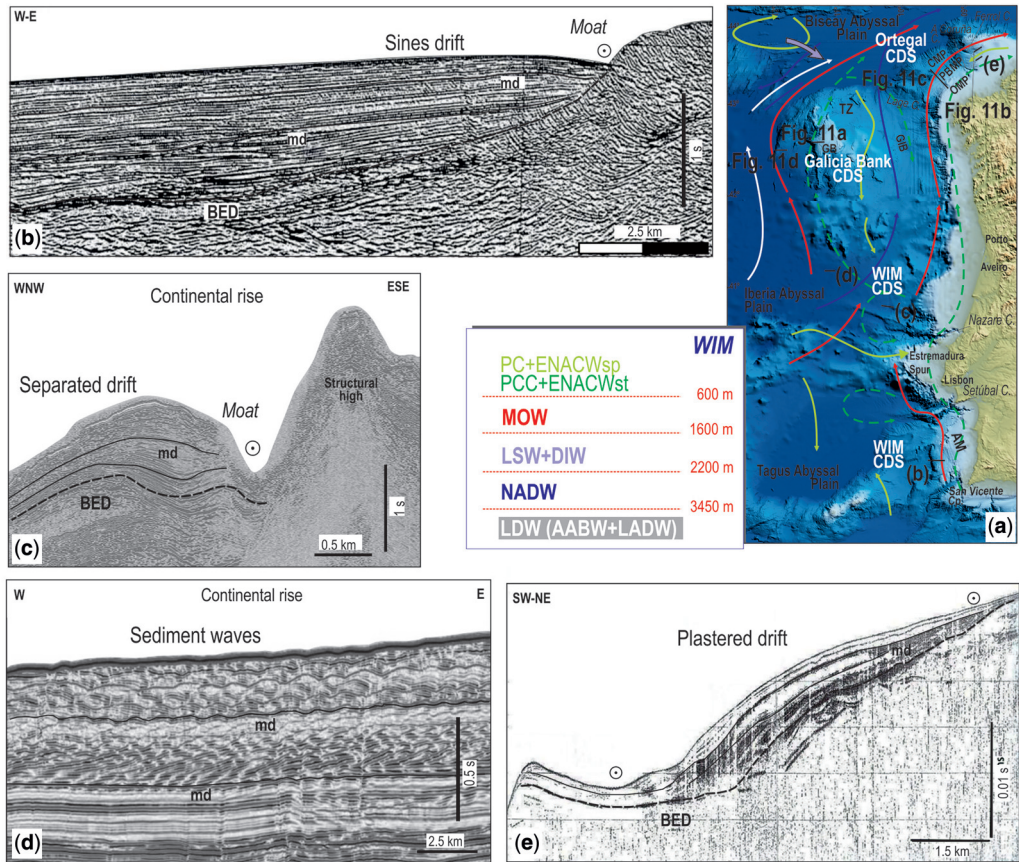


Fig. 10. (a) Digital bathymetric model of the western Iberian continental margin and continental rise, and the locations of the main water masses and seismic profiles. (b) & (c) Airgun and sparker seismic profiles showing examples of mounded separated drifts and moats, and (d) sediment waves (modified from [Alves et al. 2003, 2006](#); [Pereira & Alves 2011](#); [Roque et al. 2012](#)). (e) TOPAS seismic profile where an example of a plastered drift is shown (modified from [Llave et al. 2013](#)). AM, Alentejo Margin; CMP, Castro Marginal Platform; GB, Galicia Bank; GIB, Galicia Interior Basin; OMP, Ortegal Marginal Platform; PBMP, Pardo Bazán Marginal Platform; TZ, Transitional Zone; BED, Basal Erosive Discontinuity; md, major discontinuity.

slope of the western Galician continental margin, specifically at the foot of and near highs reaching approximately 2000 m water depth ([Ercilla et al. 2006](#); [Bender et al. 2012](#)). Sediment waves contour the surface of this drift. The second drift occurs in the Transitional Zone (TZ: 1600–2500 m) ([Ercilla et al. 2011](#)). A third occurs along the Galicia Bank plateau (GB: 700–800 m water depth), where several moats and associated drifts (15–250 m tall from the moat axis to the top of the drift crest and 1–5 km wide) are developed at its foot and around the numerous highs ([Fig. 11a](#)). Elongated separated drifts have formed on one flank adjacent to three of the aforementioned highs, while local plastered drifts form on the other flank ([Ercilla et al. 2008b, 2011](#)). As such, these separated drifts form part of the Galicia Bank

CFs. The fourth separated drift locality occurs at the heads of the Ferrol and A Coruña canyons at water depths of 500 and 700 m, and as part of the Pardo Bazán marginal platform at a depth of 1600 m in the Ortegal CFs ([Fig. 11b](#)). These drifts exhibit mounded shapes, and are 5–22 km long, 2–10 km wide and average 50 m in thickness ([Jané et al. 2012](#); [Llave et al. 2013, 2018](#); [Collart et al. 2018](#)). A separated drift occurs at the foot of the highs across the lower slope of the western Galician continental margin ([Bender et al. 2012](#)). Several of these drifts host sediment waves, which are also developed at the heads of the Ferrol and A Coruña canyons ([Jané et al. 2012](#); [Collart et al. 2018](#); [Llave et al. 2018](#)).

Abraded surfaces are tens of metres in relief and several hundreds of metres long. Seismic images

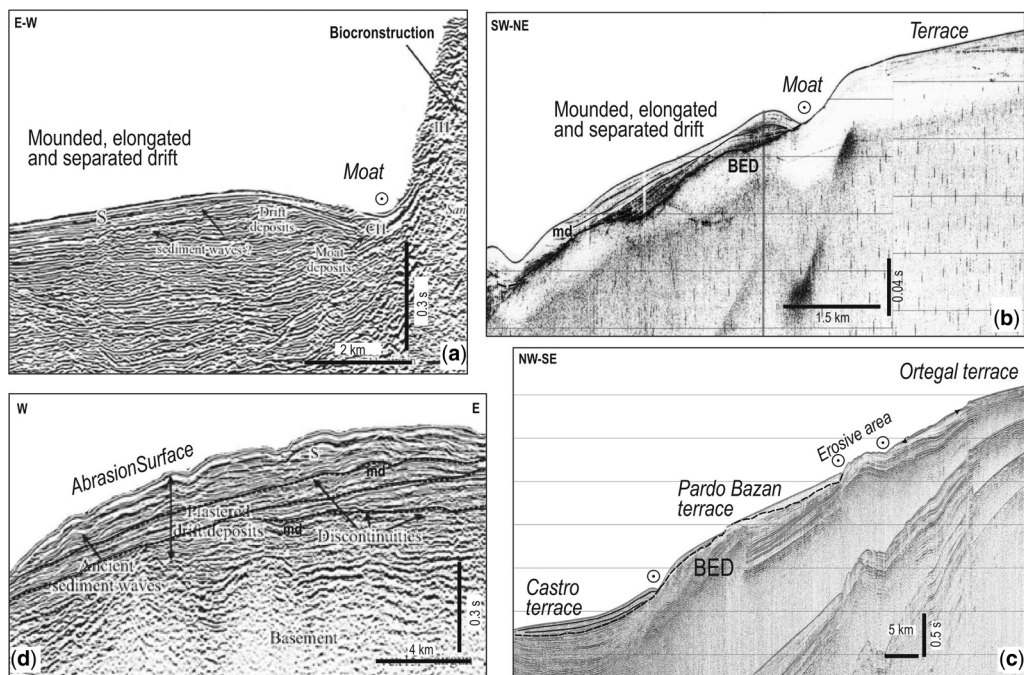


Fig. 11. (a) & (b) TOPAS seismic profiles showing examples of mounded separated drifts and moats (modified from [Ercilla et al. 2011](#); [Llave et al. 2013](#)). (c) Airgun seismic profile showing the distribution of three contourite terraces (modified from [Llave et al. 2013](#)). (d) TOPAS seismic profile where an abrasion surface is shown on a plastered drift (modified from [Ercilla et al. 2011](#)). For the locations of the seismic profiles see [Figure 10](#). BED, Basal Erosive Discontinuity; md, major discontinuity.

show reflectors for these features terminating against eroded seafloor surfaces that form large-scale contourite terraces. The main abraded surfaces occur along the Ortegal, Pardo Bazán and Castro marginal platforms (OMP, PBMP and CMP, respectively) where they form three contourite terraces at water depths of 200–600, 900–1800 and 2000–3500 m, respectively (Ortegal CDS) (Fig. 11c) ([Jané et al. 2012](#); [Llave et al. 2018](#)). These represent structural highs (Fig. 11d) ([Ercilla et al. 2008b, 2011](#)). The Ortegal terrace is the most extensive of these highs, spanning approximately 150 km in length, up to 70 km in width to the north and approximately 20 km width in the south ([Llave et al. 2013, 2018](#)). Moats are erosional features that typically occur at the foot of structural scarps and highs (Fig. 11a). These can represent tens of metres (depth) and hundreds of metres (width) of erosional incision. Their asymmetrical, V-shaped cross-sections exhibit steeper eastern margins ([Ercilla et al. 2011](#)). Several moats occur on the Ortegal terrace and at the heads of the Ferrol and A Coruña canyons (Fig. 11b) ([Jané et al. 2012](#); [Llave et al. 2013, 2018](#); [Collart et al. 2018](#)).

Older contourite deposits may also occur along the western Iberian margin, particularly within the

Iberian abyssal plain (southern Galicia Bank CFs). Sediment waves occur within the upper rise according to Miocene–Quaternary sediments drilled at ODP Site 1069 ([Shipboard Scientific Party 1998](#)) and according to middle Eocene deposits offshore of Oporto, drilled by ODP Leg 149 and in the DSDP Leg 48B area ([Wilson et al. 1996, 2001](#)). [Soares et al. \(2014\)](#) have described several Cretaceous drifts consisting of elongated mounded drifts along the outer proximal margin. These workers inferred the presence of sheeted drifts along the distal margin offshore of NW Portugal deposited after the Aptian–Albian lithospheric break-up. Near the continental margin of the Galicia Bank, deposits drilled by ODP Leg 103 ([Boillot et al. 1987](#); [Comas & Maldonado 1988](#)), DSDP Leg 47B Site 398 along the southern margin of the Vigo Seamount ([Maldonado 1979](#)) and ODP Leg 149 sites 897–901 ([Alonso et al. 1996](#); [Milkert et al. 1996](#)) were also interpreted as contourites deposited in the late Miocene.

Cantabrian margin

Oceanographic setting. Along the Cantabrian continental margin, most of the water masses originate

in the North Atlantic or result from interactions between waters originating in the Atlantic and Mediterranean. The uppermost water mass is the ENACW, which extends to depths of approximately 400–600 m and flows westwards along the continental margin (Fig. 1; Table 1) (González-Pola 2006). It generally flows at a velocity of 1 cm s^{-1} , although it can occasionally reach velocities of up to 10 cm s^{-1} (Pingree & Le Cann 1990). Between water depths of 400–500 and 1500 m, the MOW follows the continental slope as a contour current (Fig. 1). Seafloor irregularities and the Coriolis effect control the local MOW circulation. Although detailed information is lacking on MOW circulation in the Bay of Biscay, it appears to split into two branches around the Galicia Bank. One of these continues northwards, while the other flows eastwards along the Cantabrian margin slope (Iorga & Lozier 1999; González-Pola 2006). From Ortegá Spur to Santander, the MOW propagates along the slope at reduced velocities. Its minimum velocity is around $2\text{--}3 \text{ cm s}^{-1}$ at 6° W and 8° W (Pingree & Le Cann 1990; Díaz del Río *et al.* 1998). The NADW occurs between water depths of 1500 and 3000 m (Fig. 1), and includes a core of LSW at a depth of approximately 1800 m (Vangriesheim & Khrpounoff 1990; McCartney 1992). The LDW forms beneath the NADW primarily due to mixing of the deep AABW and the LSW (Botas *et al.* 1989; Haynes & Barton 1990; McCartney 1992) (Fig. 1). A cyclonic recirculation cell develops over the Biscay abyssal plain. This feature exhibits a characteristic polewards velocity near the continental margin of $1.2 (\pm 1.0) \text{ cm s}^{-1}$ (Dickson *et al.* 1985; Paillet & Mercier 1997).

Contourite features. The Le Danois CDS has been identified along the Cantabrian margin (Fig. 12; Table 2) in an area surrounded predominantly by downslope processes (Ercilla *et al.* 2008a; Iglesias 2009; Van Rooij *et al.* 2010). This CDS includes both depositional and erosional features (separated drifts, plastered drifts, moats and scours) generated by the MOW circulation and controlled by seafloor irregularities including two topographical highs: the large Le Danois Bank and the smaller Vizco High (Fig. 12a) (Van Rooij *et al.* 2010).

The Le Danois CDS includes two separated drifts: the Gijón and Le Danois drifts. The Gijón Drift occurs along the upper slope at water depths of approximately 400–850 m and has a maximum thickness of 0.25 s (Fig. 12b; Table 2). The Le Danois Drift occurs at the foot of the southern side of the Le Danois Bank at water depths of between 800 and 1500–1600 m. This feature is approximately 0.3 s thick and varies in width, reaching as much as 10 km width in its central part but only spanning 3.5–4 km to the west and 4.7 km to the east

(Fig. 12b). Three plastered drifts of about 1 s thickness occur along the upper, southern slope of the Le Danois Bank (Van Rooij *et al.* 2010). These appear as mounded relief along the western edge between water depths of 600 and 750 m, and on the eastern edge at depths of 750–1100 and 1100–1550 m (Fig. 12c; Table 2).

Moats and scours are the main erosional features of the Le Danois CDS. The two moats identified are referred to as the Gijón and Le Danois moats. As the upslope continuation of Gijón Canyon, the Gijón moat trends NW–SE, and spans approximately 45 km length and 1–4 km width. This feature begins at 1100 m water depth, incises an additional 400 m in the west and disappears to the east (Fig. 12b). The Le Danois moat trends in a WNW–ESE direction and extends from depths of 800–1500 m towards the east. It spans 48 km in length, varies from 0.8 to 2.8 km in width and incises 75–105 m of surface (Fig. 12b). Scour alignments trending NE and ENE occur on one of the plastered drifts. These span 5.5–28 km in length, 1250 m in width and run c. 5 m deep (Van Rooij *et al.* 2010).

Sedimentology of contourite features

Contourite deposits along the Iberian margin range in grain size from clay to sand but primarily are categorized as mud-rich. Deposits include thin, interbedded layers of fine-grained sand and silt of terrigenous and biogenic origin. The fine-grained beds are predominantly poorly sorted, intensely bioturbated and typically display broad rhythmic bedding (Stow *et al.* 2002a, c).

Faugères *et al.* (1984) and Gonthier *et al.* (1984) proposed the original contourite facies model sequence based on research across the Faro Drift along the middle slope of the Gulf of Cadiz. Their model consists of two superposed units, including a basal coarsening-upward unit grading from homogeneous mud (clay, fine silt) to mottled coarser silt and finally to sandy silt/silty sand. This is followed by a fining-upward unit with an inverse facies succession. This general ‘bigradational’ model theoretically represents an increase bottom-current flow followed by a decline in current strength (Stow & Holbrook 1984; Stow *et al.* 2002b; Huneke & Stow 2008). Stow & Faugères (2008) extended this model to include five sedimentary divisions applied to the standard bigradational contourite sequence (C1–C5) (Fig. 13). The model can be applied to contourites of siliciclastic, volcanic, bioclastic or mixed composition. Bioturbation limits preservation of sedimentary structures but indistinct to discontinuous parallel laminations, coarser sand layers or rare cross-laminations may occur. The facies model interprets the bigradational sequence as two shifts in the strength of the bottom-current flow: from weak to

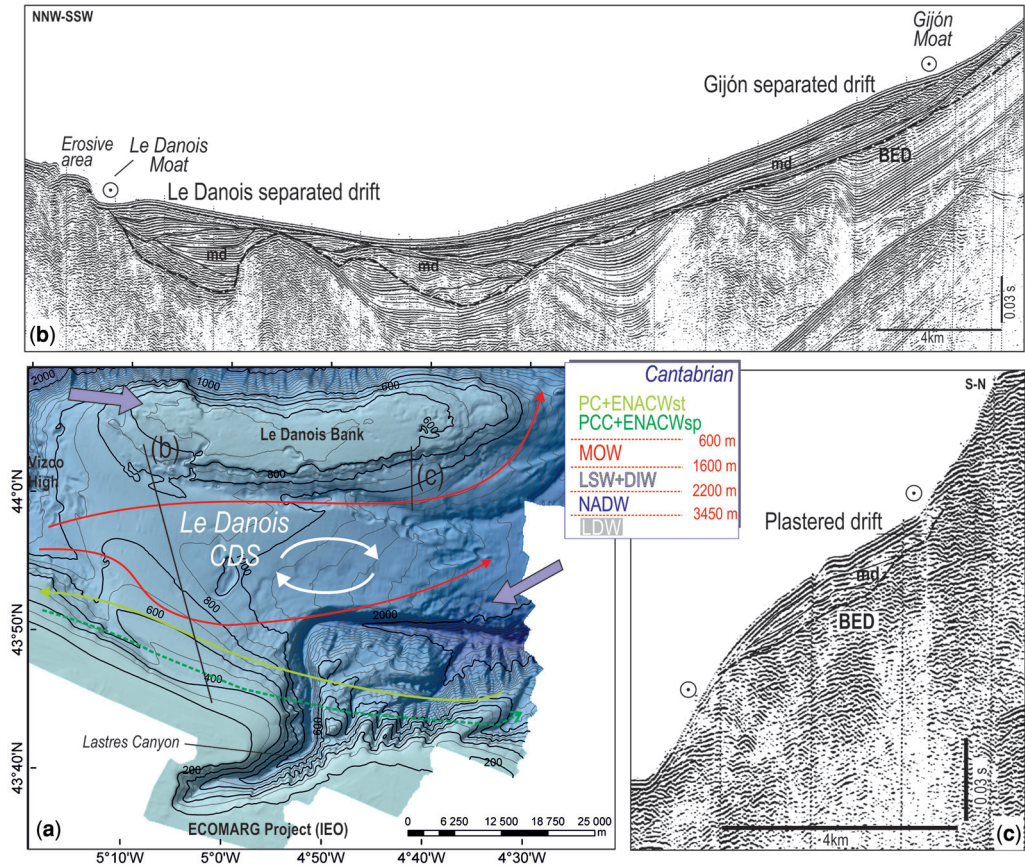


Fig. 12. (a) Digital bathymetric model of the Le Danois continental margin, and the description of the main contourite features based on the location of the main water masses and seismic profiles. (b) & (c) Airgun seismic profiles where mounded separated drifts and moats, as well as a plastered drift are shown (modified from Van Rooij *et al.* 2010). BED, Basal Erosive Discontinuity; md, major discontinuity.

strong, and then back to weak. The continued presence of coarsening-/fining-upward trends in grain size along with strong bioturbation and mottling indicates continuous, gradual (relative to gravity flow deposits) deposition of sediments through bottom-current processes. As the velocity increases, coarser sediment predominates as the removal of the fine fraction produces coarser, better-sorted sedimentary packages (Nelson *et al.* 1993). Stow & Faugères (2008) also described sandy contourites that contain an inversely graded lower sub-sequence (mud + mottled silt and mud units), a middle sandy silt and an upper normally graded sub-sequence (mottled silt and mud + mud units). Most of these deposits were interpreted as bottom-current-modified turbidites (Faugères & Stow 1993, 2008; Stow *et al.* 2002a, b; Stow & Faugères 2008). Mulder *et al.* (2013) concluded that contourite sequences record changes in bottom-current velocity and flow

competency but may also depend on sediment supply. These workers hypothesized that increased erosion of mud along the flanks of confined contourite channels and moats or increases in sediment supply by rivers and downslope mass transport along the continental shelf and upper slope provided the coarse, terrigenous sediment observed.

Coarse terrigenous sediment is significant in the Gulf of Cadiz. Research from IODP Expedition 339 and cores from other cruises have detected voluminous, mature and well- to moderately sorted contourite sands that form laterally extensive sheeted drifts, channel-floor cover or patch drifts in contourite channels (Buitrago *et al.* 2001; Viana *et al.* 2007; Hanquiez 2006; Hanquiez *et al.* 2007; Viana 2008; Stow *et al.* 2011a, b, 2013b; Brackenridge *et al.* 2013, 2018; Hernández-Molina *et al.* 2014a, b).

The Ortegale Spur of the Ortegale contourite terrace (Llave *et al.* 2013) also hosts compositionally

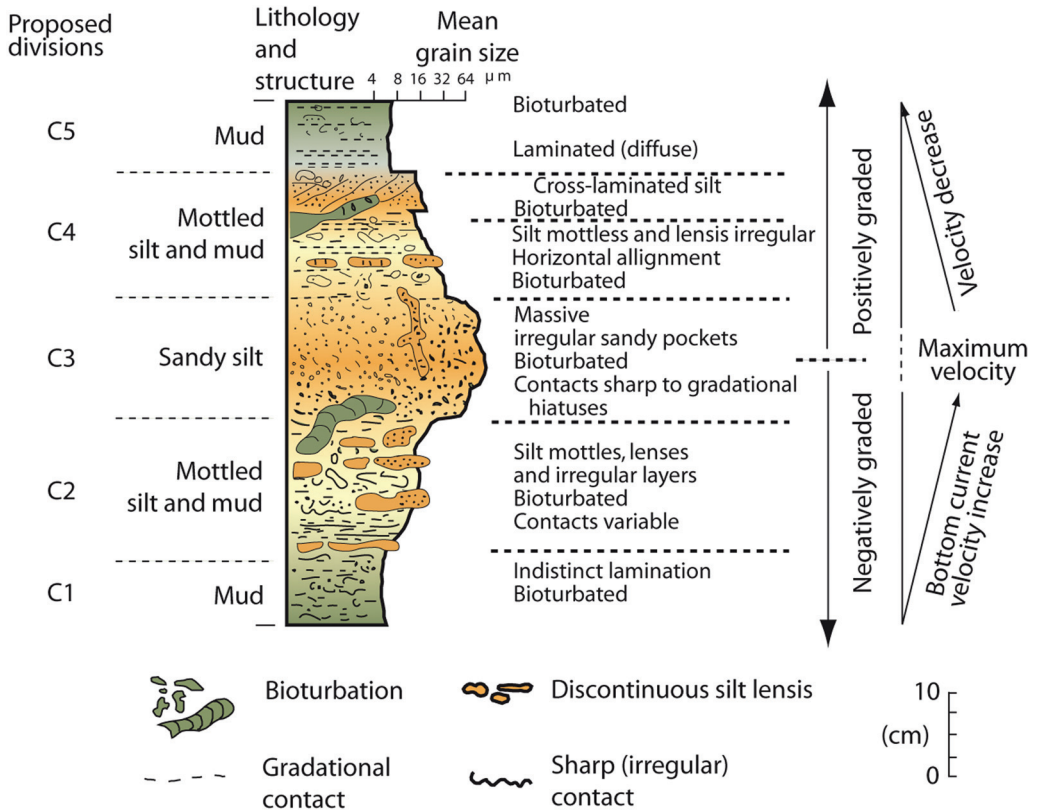


Fig. 13. Standard contourite sequence of facies models linked to variations in contour-current velocity (from Stow & Faugères 2008; based on the original figure from Gonthier *et al.* 1984).

mature, coarse and silty sands. Sands specifically consist of subrounded and well-sorted quartz, and glauconite grains with abundant bioclastic fragments. The bioclasts include fragments of foraminifera, gastropods, bivalves and pteropods (Alejo *et al.* 2012).

Translating seismic facies to sedimentary facies

Contourite features are described and systematized here according to their seismic characteristics. Interpretations therefore depend heavily on the external drift morphology, internal stacking pattern of depositional units and other aspects apparent in seismic images. Local and regional water-circulation patterns and palaeoceanographical models support these interpretations.

Drift morphologies (i.e. separated, sheeted, plastered and confined drifts) are recognized at the scale of the drifts themselves (Fig. 14). Slope-plastered contourite drifts predominate upper slope settings. These often occur in the presence of elongated erosional surfaces along the uppermost slope and in

downslope areas, accompanied by a mounded along-slope elongated drift, with frequent sediment waves and internal erosional surfaces (Fig. 14). In middle and lower slope areas, complex seafloor physiography caused by tectonics creates obstacles for current flow. These features induce local acceleration, and create a considerable variety of drifts and erosional features such as moats, channels and furrows (Fig. 14). Middle and lower slope areas also host contourite terraces, which form from both depositional and erosional processes (Fig. 14).

Depositional units within contourites reported around Iberia are generally lenticular in shape, and have well-layered, convex-up seismic units of good lateral continuity along both strike and dip (Figs 2–12). Stacking patterns show downlapping (onlapping on steep slopes) and sigmoidal progradational reflector patterns where downstream and upslope migration has occurred (Figs 2–12).

Table 3 lists seismic facies most commonly recognized from Iberian contourite drifts. Among these are: (a) transparent layers of variable thickness intercalated with zones of high- to moderate-

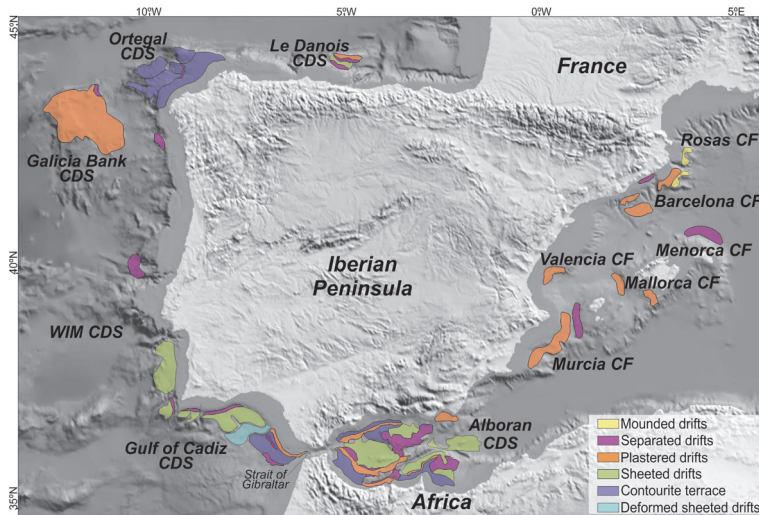


Fig. 14. Locations and depths (in metres) of the main types of drifts along the Iberian margin: C, confined; Ch, channel related; M, mound; P, plastered; S, separated; Sh, sheeted; Sw, sediment waves. The image also shows contourite features (red), erosive features (purple) and unpublished features (orange). See Table 1 for more detail regarding their characteristics.

amplitude seismic reflectors, particularly in sheeted drifts (Figs 6a, 7d, 8a–c); and (b) smooth, parallel, moderate- to high-amplitude reflectors typically interbedded with transparent zones in plastered drifts and common throughout mounded, confined and channel-related drifts (Figs 2b, 3a–d, 4a, b, 5b, c, 6b–d, 7c, 9a, 10b, c, 11a, b & 12b, c). Discontinuous seismic facies include short, discontinuous to chaotic reflectors (c) of moderate to high amplitude occurring in most drifts, particularly in mounded drifts and moats (Figs 2a, 3a & 3d, 6b, c, 7c, 9a, 10c, 11a & 12b). Sigmoid progradational reflectors (d) occur in mounded drifts where strong downstream and/or oblique migration has occurred. They are also common in separated drifts (Figs 3b, 7c & 12b). Gently wavy reflectors (e) are common over parts of several drifts (Figs 3c, 8d & 10d). Contourite terraces and practically all contourite depositional systems host horizontal and low-inclination (f) reflectors truncated at the seafloor or by an internal erosional surfaces (e.g. Figs 4a, b, 5b, 9a, b & 11b, c).

Relatively uniform deposits (fine or coarse sediments) tend to exhibit transparent or weak seismic facies, whereas extensive sheets of interbedded coarse- and fine-grained sediments exhibit higher-amplitude seismic reflectors with good lateral continuity. The aforementioned laterally extensive progradational to aggradational seismic units with sub-parallel, variable amplitude reflectors indicate muddy compositions. By contrast, moats within contourite channels and many contourite terraces exhibit high-amplitude reflections (HARs). These

high-amplitude seismic reflections span a few kilometres in width and are interpreted as coarse-grained sediments (Deptuck *et al.* 2003; Posamentier & Kolla 2003). These facies occur in erosional features such as moats and along channel axes (Table 3), which develop in channels around seafloor irregularities. Contourite terraces (e.g. Alboran, Gulf of Cadiz, WIM and Ortegal) (Fig. 14; Table 3) and overflow features can also appear as HAR seismic facies. The Gulf of Cadiz' proximal Sector 1 is an example of an overflow feature where an exceptionally thick sandy sheeted drift appears as an extensive HAR unit (Fig. 14).

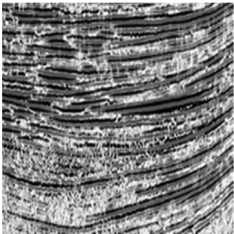
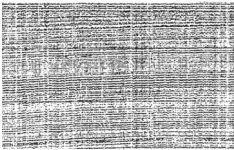
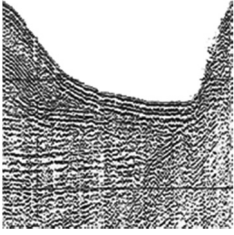
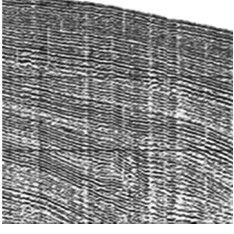
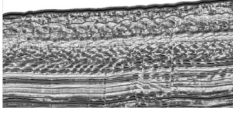
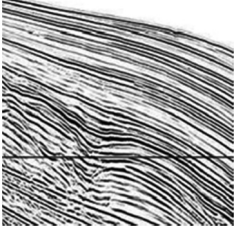
Contourite features described here occur at depths corresponding to the principal interfaces between MAW–LIW–WMDW in the Western Mediterranean Sea, and between the ENACW–MOW–NADW in the Atlantic. The HARs, however, do not appear to correspond with enhanced bottom currents, development of terraces on top of plastered drifts or bottom-current modification of sand layers exposed at the seafloor surface. Their origin and interpretation remain unresolved in spite of their economic potential as hydrocarbon reservoirs.

Discussion

Factors influencing contourite seismic/sedimentary facies changes

Contourite drifts along the Iberian margin exhibit certain stratigraphic patterns in their reflection

Table 3. *Main high-amplitude reflectors (HARs) for contourite features along the Iberian margins*

Seismic section	Seismic facies characteristics	Depositional setting	Location
	Transparent layers intercalated with moderate- to high-amplitude reflectors	Sheeted drifts	Proximal sector Gulf of Cádiz CDS
	Smooth, parallel moderate- to high-amplitude reflectors typically interbedded with transparent zones	Plastered drifts and throughout mounded, confined and channel-related drifts	Around Iberia middle continental slopes
	Short, discontinuous to chaotic reflectors of moderate- to high-amplitude reflectors	Moats, channels, furrows	Around Iberian continental slope bathymetric irregularities
	Sigmoid and/or oblique progradational reflectors with strong downstream migration	Mounded drifts	Around Iberia middle continental slopes
	Gently wavy reflectors	Over parts of several drifts	Around Iberia middle continental slopes and rise
	Horizontal or low-inclination moderate- to high-amplitude reflectors truncated by HAR erosional surfaces	Contourite terraces	Alboran Sea, Gulf of Cadiz, Galician margin (marginal platforms)

amplitudes (Figs 2–12). These patterns include a more transparent facies (T) at the base, higher amplitude reflections (R) in the upper part and a subtle but continuous high-amplitude erosional surface at the top. In the case of the Faro Drift (Gulf of Cadiz), these variations have been attributed to long-term changes in bottom-current strength at different scales through the latest Pliocene and Quaternary (Llave *et al.* 2001; Stow *et al.* 2002a, b, c; Hernández-Molina *et al.* 2016a). This mechanism creates repeated coarsening-upward sequences bounded by erosional surfaces at unit and sub-unit scales.

In the case of the Gulf of Cadiz CDS, several studies interpreted these facies as reflecting changes in MOW bottom-current strength (e.g. Gonthier *et al.* 1984; Faugères *et al.* 1985a, b; Stow *et al.* 1986, 2002b; Sierro *et al.* 1999; Roque *et al.* 2012) linked to eustatic/climatic drivers and MOW variability (Voelker *et al.* 2006; Toucanne *et al.* 2007; García *et al.* 2009; Rogerson *et al.* 2012; Bahr *et al.* 2014; Hernández-Molina *et al.* 2014a). IODP Expedition 339 sampled some of the Gulf of Cadiz CDS seismic facies and found that transparent seismic facies corresponded to fine-grained contourites, while HARs corresponded to mature, well-sorted contourite sands that reached up to 10 m in thickness (Stow *et al.* 2013b; Hernández-Molina *et al.* 2014b, 2016a).

Interacting factors determine the degree to which bottom currents can influence the morphology of the Iberian margin. At longer timescales, tectonic factors determine the role that downslope sediment transport plays in margin development. Tectonics also influence contourite sedimentation as the mechanism producing remnant marginal platforms, structural highs and the opening of the Gibraltar Strait itself (i.e. northwestern Iberian margins: Maestro *et al.* 2015; Llave *et al.* 2018). On shorter timescales, climate and sea-level changes cause deepening or shoaling of water masses. This in turn controls the vertical distribution of sand and mud deposits, associated acoustic facies, stratigraphic stacking patterns and thicknesses. Climate and sea-level changes also drive the general behaviour of the water masses and influence depositional styles along the margins. In the Gulf of Cadiz and west of Iberia, Mediterranean water masses flowed more swiftly and at greater depths during glacial periods (Schönfeld & Zahn 2000; Rogerson *et al.* 2005; Llave *et al.* 2006; Voelker *et al.* 2006; Ercilla *et al.* 2016). This would favour local development of sandy contourites at intermediate to deeper water depths along the continental slope. These factors explain the Iberian margin's overall sedimentary evolution from dominantly downslope or mixed alongslope–downslope sedimentary processes at the beginning of the Pliocene to more alongslope sedimentation with the Quaternary opening of the Strait of Gibraltar

(Roque *et al.* 2012; Brackenridge *et al.* 2013; Hernández-Molina *et al.* 2016a; Ercilla *et al.* 2016).

The relationship between oceanographic processes and the depositional, erosional and mixed features observed among Pliocene and Quaternary contourites allows for interpretation of similar features in the ancient record. Ancient oceans consisted of different water masses and circulation regimes than those observed today (e.g. Hay 2009). The most discernible patterns belong to extreme glacial maxima and greenhouse conditions (Pickering & Hiscott 2016). Records left by ancient water masses should, nevertheless, resemble sandy and muddy deposits described here.

Implications for petroleum exploration

Thick and widespread progradational to aggradational depositional units characterized by sub-parallel reflectors of varying amplitude in seismic images are interpreted as representing fine-grained drifts occurring throughout the Iberian margin. Continuous HARs, indicative of sandier contourites, occur in moats and channels, in contourite terraces, and in sectors with sheeted drifts affected by overflows. IODP Expedition 339 drilled several of these drifts around the Gulf of Cadiz and western Iberian margin. These features exhibit seismic facies similar to those observed in other sectors of the Iberian margin. Sampling of these drifts showed that sub-parallel reflectors of variable amplitude corresponded to muddy contourites that were sometimes enriched in organic carbon (up to 2 wt%). These units could therefore serve as both seals and potential source rocks (Hernández-Molina *et al.* 2013; Stow *et al.* 2013b). Sampling of seismic features associated with sandy contourites also suggests extensive distribution of mature, well-sorted Pliocene–Quaternary sands (Expedition 339 Scientists 2012; Hernández-Molina *et al.* 2013; Stow *et al.* 2013b). HARs indicate sandy contourites: for example, in southeasterly areas of the Gulf of Cadiz (affected by the overflow processes), where Brackenridge *et al.* (2013, 2018) identified a tabular, aggradational sedimentary stacking pattern associated with a buried, mixed contourite–turbidite succession. This feature includes a sand- and clay-rich interval between 925 and 1740 m which reaches 815 m in thickness. With 600 m of sand alone, this contourite could serve as a potential reservoir unit (Buitrago *et al.* 2001; García-Mojonero & Martínez del Olmo 2001). Cakebread-Brown *et al.* (2003) have also interpreted HARs and AVO (amplitude v. offset) anomalies from this unit as high-porosity (30%), gas-bearing contourite sands.

The Santos Drift in the northern Santos Basin includes more than 600 m of fine-grained Neogene-aged sand and silt, and thus acts as seal rock for

Paleogene oil-bearing sandstones (Duarte & Viana 2007). Similar sandy contourites have been described along the Uruguayan margin (Hernández-Molina *et al.* 2016b), within the Pliocene sedimentary record of the Gulf of Mexico (Shanmugam *et al.* 1993), in Eocene deposits of the Campos Basin, Brazil (Mutti *et al.* 1980; Viana & Rebesco 2007) and in the northeastern Atlantic (Nelson *et al.* 1993; Howe *et al.* 1994; García-Mojonero & Martínez del Olmo 2001; Stow *et al.* 2002a, c, 2013a, b; Habgood *et al.* 2003; Akhmetzhanov *et al.* 2007; Hernández-Molina *et al.* 2014a, b). In these cases, HARs record contourite deposits mainly composed of medium- to fine-grained sand with common bedforms, such as mega-ripples and sand waves (Stoker *et al.* 1998; Viana *et al.* 1998, 2002; Masson *et al.* 2004; Shanmugam 2006, 2012, 2013b; Mutti & Carminatti 2012).

Similarities between these features and those described from the Gulf of Cadiz (Hernández-Molina *et al.* 2016a) and Iberian continental margin indicate the economic potential of sandy contourites from these areas. The occurrence of fine- to coarse-grained sedimentary materials associated with contourites around Iberia could inform interpretation of deeper-water sedimentary facies from the ancient record. Emerging information on contourites could also facilitate innovations in deep-water petroleum exploration strategies.

Conclusions and future areas of study

Contourite features of the Iberian continental margin include extensive depositional, erosional and mixed (depositional and erosional) features developed along the continental slope due to bottom-current dynamics. Depositional features include mounded, elongated and separated, sheeted, plastered, confined, and channel-related drifts. Erosional features include moats, channels and furrows, while terraces are interpreted as mixed erosional–depositional features. Large mud-dominated contourite drifts with good, alongslope continuity could serve as petroleum source rocks. Moats, channels and sheeted drifts proximal to overflows and contourite terraces exhibit high-amplitude reflections (HARs) in seismic images. These are interpreted as extensive sandy contourites that could also serve as potential hydrocarbon reservoirs.

The muddy/sandy contourites described here, along with the overall deep-water morphology of the Iberian margin generally record intermediate- to deep-water masses and their interfaces from the Pliocene to Quaternary. The connection between observed features and mechanisms makes these features good analogues for interpreting recent or ancient deep-water environments, and useful in

identifying potential seals and reservoir rocks. Similar contourite features in deeper or older sediments could represent future petroleum exploration opportunities. Advances in geophysics, offshore 3D seismic imaging and robust correlation with well-log and borehole data will help further understanding of contourites and their role in petroleum systems.

Acknowledgements The research was conducted in the framework of ‘The Drifters Research Group’ of the Royal Holloway University of London (UK). Thanks to SECEG and SNED for permission to include a seismic profile obtained during an oceanographic cruise in the Strait of Gibraltar (Fig. 7b), and to the ECOMARG Project for providing the multibeam bathymetry data obtained in Le Danois or ‘El Cachucho’ (Fig. 11a). We thank the editor, Dr Ken McClay, and the two reviewers, Dr Domenico Chiarella and anonymous, for their positive and useful comments, which have improved the original submitted version.

Funding This contribution is a product of the IGCP-619 and INQUA-1204 projects, and is partially supported through the CTM 2008-06399-C04/MAR (CONTOURIBER), CGL2011-16057-E (MOW), CTM 2012-39599-C03 (MOWER), CGL2016-80445-R (SCORE), FCT-PTDC/GEO-GEO/4430/2012 (CONDRIBER), CTM2016-75129-C3-1-R and CGL2015-74216-JIN projects.

Author contributions EL: Investigation (Lead), Writing – Original Draft (Lead); FJH-L: Investigation (Equal), Writing – Review & Editing (Equal); MG: Investigation (Supporting), Writing – Review & Editing (Supporting); GE: Investigation (Supporting), Writing – Review & Editing (Supporting); CR: Investigation (Supporting), Writing – Review & Editing (Supporting); CJ: Investigation (Supporting), Writing – Review & Editing (Supporting); AM: Investigation (Supporting), Writing – Review & Editing (Supporting); BP: Investigation (Supporting), Writing – Review & Editing (Supporting); DVR: Investigation (Supporting), Writing – Review & Editing (Supporting); MR: Investigation (Supporting), Writing – Review & Editing (Supporting); RB: Investigation (Supporting), Writing – Review & Editing (Supporting); GJ: Investigation (Supporting), Writing – Review & Editing (Supporting); MG-B: Investigation (Supporting), Writing – Review & Editing (Supporting); DS: Investigation (Supporting), Writing – Review & Editing (Supporting).

References

- AKHMETZHANOV, A., KENYON, N.H., HABGOOD, E., VAN DER MOLLEN, A.S., NIELSEN, T., IVANOV, M. & SHASHKIN, P. 2007. North Atlantic contourite sand channels. *In*: VIANA, A.R. & REBESCO, M. (eds) 2007. *Economic and Palaeoceanographic Significance of Contourite Deposits*. Geological Society, London, Special

- Publications, **276**, 25–47, <https://doi.org/10.1144/GSL.SP.2007.276.01.02>
- ALEJO, I., NOMBELA, M.A. ET AL. 2012. Caracterización de los sedimentos superficiales en tres sistemas deposicionales contorníticos (Golfo de Cádiz, Cabo Ortegal y El Cachucho): implicaciones conceptuales. Resúmenes extendidos del VIII, Congreso Geológico de España. *Geo-Temas*, **13**, 1781–1784.
- ALONSO, B., COMAS, M.C., ERCILLA, G. & PALANQUES, A. 1996. Data report: textural and mineral composition of Cenozoic sedimentary facies off the western Iberian Peninsula, Sites 897, 898, 899 and 900. In: WHITMARSH, R.B., SAWYER, D.S., KLAUS, A. & MASSON, D.G. (eds) *Proceedings of Ocean Drilling Program, Scientific Results, Volume 149*. Ocean Drilling Program, College Station, TX, 741–754.
- ALVES, T.M., GAWTHORPE, R.L., HUNT, D. & MONTEIRO, J.H. 2000. Tertiary evolution of the São Vicente and Setúbal submarine canyons (southwest Portugal): insights from seismic stratigraphy. *Cenozoico de Portugal, Ciências da Terra*, **14**, 243–256, <http://hdl.handle.net/10362/4716>
- ALVES, T.M., GAWTHORPE, R.L., HUNT, D.W. & MONTEIRO, J.H. 2003. Cenozoic tectono-sedimentary evolution of the western Iberian margin. *Marine Geology*, **195**, 75–108, [https://doi.org/10.1016/S0025-3227\(02\)00683-7](https://doi.org/10.1016/S0025-3227(02)00683-7)
- ALVES, T.M., MOITA, C., SANDNES, F., CUNHA, T., MONTEIRO, J.H. & PINHEIRO, L.M. 2006. Mesozoic–Cenozoic evolution of North Atlantic continental-slope basins: the Peniche basin, western Iberian margin. *American Association of Petroleum Geologists Bulletin*, **90**, 31–60, <https://doi.org/10.1306/08110504138>
- AMBAR, I. & FIÚZA, A. 1994. Some features of the Portugal Current System: A poleward slope undercurrent, an upwelling related southward flow and an autumn-winter poleward coastal surface current. In: *Proceedings of the 2nd International Conference on Air–Sea Interaction and on Meteorology and Oceanography of the Coastal Zone*. American Meteorological Society, Boston, MA, 286–287.
- AMBAR, I. & HOWE, M.R. 1979. Observations of the Mediterranean outflow – II. The deep circulation in the vicinity of the Gulf of Cadiz. *Deep Sea Research*, **26A**, 555–568, [https://doi.org/10.1016/0198-0149\(79\)90096-7](https://doi.org/10.1016/0198-0149(79)90096-7)
- AMBAR, I., ARMI, L., BOWER, A. & FERREIRA, T. 1999. Some aspects of time variability of the Mediterranean water off south Portugal. *Deep Sea Research*, **1**, **46**, 1109–1136, [https://doi.org/10.1016/S0967-0637\(99\)00006-0](https://doi.org/10.1016/S0967-0637(99)00006-0)
- AMBAR, I., SERRA, N. ET AL. 2002. Physical, chemical and sedimentological aspects of the Mediterranean outflow off Iberia. *Deep Sea Research*, **49**, 4163–4177, [https://doi.org/10.1016/S0967-0645\(02\)00148-0](https://doi.org/10.1016/S0967-0645(02)00148-0)
- AMBAR, I., SERRA, N., NEVES, F. & FERREIRA, T. 2008. Observations of the Mediterranean Undercurrent and eddies in the Gulf of Cadiz during 2001. *Journal of Marine Systems*, **71**, 195–220, <https://doi.org/10.1016/j.jmarsys.2007.07.003>
- BAHR, A., JIMÉNEZ-ESPEJO, F.J. ET AL. 2014. Deciphering bottom current velocity and paleoclimate signals from contourite deposits in the Gulf of Cádiz during the last 140 kyr: An inorganic geochemical approach. *Geochemistry, Geophysics, Geosystems*, **15**, 3145–3160, <https://doi.org/10.1002/2014GC005356>
- BARINGER, M.O. & PRICE, J.F. 1999. A review of the physical oceanography of the Mediterranean Outflow. *Marine Geology*, **155**, 63–82, [https://doi.org/10.1016/S0025-3227\(98\)00141-8](https://doi.org/10.1016/S0025-3227(98)00141-8)
- BENDER, V.B., HANEETH, T.J.J., MENA, A., BAUMANN, K.H., FRANCÉS, G. & VON DOBENECK, T. 2012. Control of sediment supply, palaeoceanography and morphology on late Quaternary sediment dynamics at the Galician continental slope. *Geo-Marine Letters*, **32**, 313–335, <https://doi.org/10.1007/s00367-012-0282-2>
- BOILLLOT, G., MALOD, J.-A., DUPEUBLE, P.-A. & CYBERE GROUP 1987. Mesozoic evolution of Ortegal Spur, North Galicia margin: Comparison with adjacent margins. In: BOILLLOT, G., WINTERER, E.L. ET AL. (eds) *Proceedings of the Ocean Drilling Program Initial Reports (Part A), Volume 103*. Ocean Drilling Program, College Station, TX, 107–119.
- BORENÁS, K.M., WAHLIN, A.K., AMBAR, I. & SERRA, N. 2002. The Mediterranean outflow splitting – a comparison between theoretical models and CANIGO data. *Deep Sea Research II*, **49**, 4195–4205, [https://doi.org/10.1016/S0967-0645\(02\)00150-9](https://doi.org/10.1016/S0967-0645(02)00150-9)
- BOTAS, J.A., FERNÁNDEZ, E., BODE, A. & ANADÓN, R. 1989. Water masses off central Cantabrian coast. *Scientia Marina*, **53**, 755–761.
- BRACKENRIDGE, R., STOW, D.A.V. & HERNÁNDEZ-MOLINA, F.J. 2011. Contourites within a deep-water sequence stratigraphic framework. *Geo-Marine Letters*, **31**, 343–360, <https://doi.org/10.1007/s00367-011-0256-9>
- BRACKENRIDGE, R.A., HERNÁNDEZ-MOLINA, F.J., STOW, D.A.V. & LLAVE, E. 2013. A Pliocene mixed contourite–turbidite system offshore the Algarve Margin, Gulf of Cadiz: Seismic response, margin evolution and reservoir implications. *Marine and Petroleum Geology*, **46**, 36–50, <https://doi.org/10.1016/j.marpetgeo.2013.05.015>
- BRACKENRIDGE, R.E., STOW, D.A.V. ET AL. 2018. Textural characteristics and facies of sand-rich contourite depositional systems. *Sedimentology*, **65**, 2223–2252, <https://doi.org/10.1111/sed.12463>
- BRYDEN, H.L. & STOMMEL, H.M. 1984. Limiting processes that determine basic features of the circulation in the Mediterranean Sea. *Oceanological Acta*, **7**, 289–296.
- BRYDEN, H.L., CANDELA, J. & KINDER, T.H. 1994. Exchange through the Strait of Gibraltar. *Progress in Oceanography*, **33**, 201–248, [https://doi.org/10.1016/0079-6611\(94\)90028-0](https://doi.org/10.1016/0079-6611(94)90028-0)
- BUITRAGO, J., GARCÍA, C., CAJEBREAD-BROW, J., JIMÉNEZ, A. & MARTÍNEZ DEL OLMO, W. 2001. Contouritas: Un Excelente Almacén Casi Desconocido (Golfo de Cádiz, SO de España). Paper presented at the Congreso Técnico Exploración y Producción REPSOL-YPF, 24–27 September 2001, Madrid, Spain.
- CAJEBREAD-BROWN, J., GARCIA-MOJONERO, C., BORTZ, R., SCHWARZHANS, W., CORTES, L. & OLMO, W.M. 2003. Offshore Algarve, Portugal: A prospective extension of the Spanish Gulf of Cadiz Miocene play. AAPG Intl Conf., AAPG Bull., Barcelona, Spain.
- CALVIN CAMPBELL, D. & MOSHER, D.C. 2016. Geophysical evidence for widespread Cenozoic bottom current activity from the continental margin of Nova Scotia, Canada. In: VAN ROOIJ, D., CALVIN CAMPBELL, D., RUEGGEBERG, A. & WAHLIN, A. (eds) *The Contourite Log-Book: Significance for Palaeoceanography, Ecosystems and Slope*

- Instability*. *Marine Geology*, **378**, 237–260, <https://doi.org/10.1016/j.margeo.2015.10.005>
- CANALS, M. 1985. *Estructura sedimentaria y evolución morfológico del talud y el glacis continentales del Golfo de León: fenómenos de desestabilización de la cobertera sedimentaria plio-cuaternaria*. PhD thesis, University of Barcelona.
- CANDELA, J. 2001. Mediterranean Water and global circulation. In: SIEDLER, G., CHURCH, J. & GOULD, J. (eds) *Ocean Circulation and Climate: Observing and Modelling the Global Ocean*. International Geophysics, **77**. Academic Press, San Diego, CA, 419–429.
- CHENEY, R.E. & DOBLAR, R.A. 1982. Structure and variability of the Alborán Sea frontal system. *Journal of Geophysical Research*, **87**, 585–594, <https://doi.org/10.1029/JC087iC01p00585>
- COLLART, T., VERREYDT, W. ET AL. 2018. Sedimentary processes and cold-water coral mini-mounds at the Ferrol canyon head, NW Iberian margin. *Progress in Oceanography*, **169**, 48–65, <https://doi.org/10.1016/j.poccean.2018.02.027>
- COLELLA, A. 1990. Active tidal sand waves at bathyal depths observed from submersible and bathysphere (Messina Strait, southern Italy). In: *Proceedings of the Thirteenth International Sedimentological Congress*, 26–31 August 1990, Nottingham, England. Abstracts. International Association of Sedimentologists, 98–99.
- COMAS, M.C. & MALDONADO, A. 1988. Late Cenozoic sedimentary facies and processes in the Iberian Abyssal Plain, Site 637, ODP Leg 103. In: BOILLLOT, G., WINTERER, E.L. ET AL. (eds) *Proceedings of the ODP Scientific Results, Volume 103*. Ocean Drilling Program, College Station, TX, 635–655.
- COPARD, K., COLIN, C., FRANK, N., JEANDEL, C., MONTERO-SERRANO, J.-C., REVERDIN, G. & FERRON, B. 2011. Nd isotopic composition of water masses and dilution of the Mediterranean outflow along the South-West European margin. *Geochemistry, Geophysics, Geosystems*, **12**, Q06020, <https://doi.org/10.1029/2011GC003529>
- CREASER, A., HERNÁNDEZ-MOLINA, F.J., BADALINI, G., THOMPSON, P., WALKER, R., SOTO, M. & CONTI, B. 2017. A Late Cretaceous mixed (turbidite–contourite) system along the Uruguayan Margin: Sedimentary and palaeoceanographic implications. *Marine Geology*, **390**, 234–253, <https://doi.org/10.1016/j.margeo.2017.07.004>
- DELIVET, S., VAN EETVELT, B., MONTEYS, X., RIBÓ, M. & VAN ROOIJ, D. 2016. Seismic geomorphological reconstructions of Plio-Pleistocene bottom current variability at Goban Spur. In: VAN ROOIJ, D., CALVIN CAMPBELL, D., RUEGGEBERG, A. & WÄHLIN, A. (eds) *The Contourite Log-Book: Significance for Palaeoceanography, Ecosystems and Slope Instability*. *Marine Geology*, **378**, 261–275, <https://doi.org/10.1016/j.margeo.2016.01.001>
- DEPTUCK, M.E., STEFFENS, G.S., BARTON, M., PIRMEZ, C. 2003. Architecture and evolution of upper fan channel-belts on the Niger Delta slope and in the Arabian Sea. *Marine and Petroleum Geology*, **20**, 649–676.
- DÍAZ DEL RÍO, G., GONZÁLEZ, N. & MARCOTE, D. 1998. The intermediate Mediterranean water inflow along the northern slope of the Iberian Peninsula. *Oceanologica Acta*, **21**, 157–163, [https://doi.org/10.1016/S0399-1784\(98\)80005-4](https://doi.org/10.1016/S0399-1784(98)80005-4)
- DICKSON, R.R., GOULD, W.J., MULLER, T.J. & MAILLARD, C. 1985. Estimates of the mean circulation in the deep (>2000 m) layer of the eastern North Atlantic. *Progress in Oceanography*, **14**, 103–127, [https://doi.org/10.1016/0079-6611\(85\)90008-4](https://doi.org/10.1016/0079-6611(85)90008-4)
- DUARTE, C.S. & VIANA, A. 2007. Santos Drift System: stratigraphic organization and implications for late Cenozoic palaeocirculation in the Santos Basin, SW Atlantic Ocean. In: VIANA, A. & REBESCO, M. (eds) 2007. *Economic and Palaeoceanographic Significance of Contourite Deposits*. Geological Society, London, Special Publications, **276**, 171–198, <https://doi.org/10.1144/GSL.SP.2007.276.01.09>
- ENJORLAS, J.M., GOUDAIN, J., MUTTI, E. & PIZON, J. 1986. New turbiditic model for the Lower Tertiary sands in the South Viking Graben. In: SPENCER, A.M. (ed.) *Habitat of Hydrocarbons on the Norwegian Continental Shelf*. Norwegian Petroleum Society, Oslo, 171–178.
- ERCILLA, ET AL. 2016. Significance of bottom currents in deep-sea morphodynamics: An example from the Alboran Sea. *Marine Geology*, **378**, 157–170.
- ERCILLA, G., BARAZA, J., ALONSO, B., ESTRADA, F., CASAS, D. & FARRÁN, M. 2002. The Ceuta Drift, Alboran Sea (southwestern Mediterranean). In: STOW, D.A.V., PUDSEY, C.J., HOWE, J.A., FAUGERES, J.C. & VIANA, A.R. (eds) 2002. *Deep-Water Contourite Systems: Modern Drifts and Ancient Series, Seismic and Sedimentary Characteristics*. Geological Society, London, Memoirs, **22**, 155–170, <https://doi.org/10.1144/GSL.MEM.2002.022.01.12>
- ERCILLA, G., CÓRDOBA, D. ET AL. 2006. Geological characterization of the Prestige sinking area. *Marine Pollution Bulletin*, **53**, 208–219, <https://doi.org/10.1016/j.marpolbul.2006.03.016>
- ERCILLA, G., CASAS, D. ET AL. 2008a. Morphosedimentary features and recent depositional architectural model of the Cantabrian continental margin. *Marine Geology*, **247**, 61–83, <https://doi.org/10.1016/j.margeo.2007.08.007>
- ERCILLA, G., GARCÍA-GIL, S. ET AL. 2008b. High resolution seismic stratigraphy of the Galicia Bank Region and neighbouring abyssal plains (NW Iberian continental margin). *Marine Geology*, **249**, 108–127, <https://doi.org/10.1016/j.margeo.2007.09.009>
- ERCILLA, G., CASAS, D. ET AL. 2009. Cartografiando la dinámica sedimentaria de la región del Banco de Galicia. In: *Nuevas Contribuciones al Margen Ibérico: 6th Symposium on the Atlantic Iberian Margin (MIA 09) Abstract Volume*. ASG, Oviedo, Spain, 201–204.
- ERCILLA, G., CASAS, D. ET AL. 2011. Imaging the recent sediment dynamics of the Galicia Bank region (Atlantic, NW Iberian Peninsula). *Marine Geophysical Researches*, **32**, 99–126, <https://doi.org/10.1007/s11001-011-9129-x>
- ERCILLA, G., JUAN, C. ET AL. 2016. Significance of bottom currents in deep-sea morphodynamics: An example from the Alboran Sea. In: VAN ROOIJ, D., CALVIN CAMPBELL, D., RUEGGEBERG, A. & WÄHLIN, A. (eds) *The Contourite Log-Book: Significance for Palaeoceanography, Ecosystems and Slope Instability*. *Marine Geology*, **378**, 157–170, <https://doi.org/10.1016/j.margeo.2015.09.007>
- ESTERAS, M., IZQUIERDO, J., SANDOVAL, N.G. & MAMAD, A. 2000. Evolución morfológica y estratigráfica plio-cuaternaria del Umbral de Camarinal (Estrecho de

- Gibraltar) basada en sondeos marinos. *Revista de la Sociedad Geológica de España*, **13**, 539–550.
- EXPEDITION 339 SCIENTISTS 2012. *Mediterranean Outflow: Environmental Significance of the Mediterranean Outflow Water and its Global Implications*. IODP Preliminary Report 339, <https://doi.org/10.2204/iodp.pr.339.2012>
- FABRES, J., CALAFAT, A., SANCHEZ-VIDAL, A., CANALS, M. & HEUSSNER, S. 2002. Composition and spatio-temporal variability of particle fluxes in the Western Alboran Gyre, Mediterranean Sea. *Journal of Marine Systems*, **33–34**, 431–456, [https://doi.org/10.1016/S0924-7963\(02\)00070-2](https://doi.org/10.1016/S0924-7963(02)00070-2)
- FAUGÈRES, J.-C. & STOW, D.A.V. 1993. Bottom-current-controlled sedimentation: a synthesis of the contourite problem. *Sedimentary Geology*, **82**, 287–297, [https://doi.org/10.1016/0037-0738\(93\)90127-Q](https://doi.org/10.1016/0037-0738(93)90127-Q)
- FAUGÈRES, J.-C. & STOW, D.A.V. 2008. Sediment drift drifts: nature, evolution and controls. In: REBESCO, M. & CAMERLENGHI, A. (eds) *Sediment Drifts*. Developments in Sedimentology, **60**. Elsevier, Amsterdam, 259–288.
- FAUGÈRES, J.C., GONTHIER, E. & STOW, D.A.V. 1984. Contourite drift molded by deep Mediterranean outflow. *Geology*, **12**, 296–300, [https://doi.org/10.1130/0091-7613\(1984\)12<296:CDMBDM>2.0.CO;2](https://doi.org/10.1130/0091-7613(1984)12<296:CDMBDM>2.0.CO;2)
- FAUGÈRES, J.C., CREMER, M., MONTEIRO, H. & GASPARD, L. 1985a. Essai de reconstitution des processus d'édification de la ride sédimentaire de Faro (Marge Sud-Portugaise). *Bulletin de l'Institut de géologie du Bassin d'Aquitaine*, **37**, 229–258.
- FAUGÈRES, J.C., FRAPPA, M., GONTHIER, E., DE RESSEGUIER, A. & STOW, D.A.V. 1985b. Modelé et faciès de type contourite à la surface d'une ride sédimentaire édifiée par des courants issus de la veine d'eau méditerranéenne (ride du Faro, Golfe de Cadix). *Bulletin de la Société Géologique de France I*, **8**, 35–47.
- FAUGÈRES, J.C., STOW, D.A.V., IMBERT, P. & VIANA, A. 1999. Seismic features diagnostic of contourite drifts. *Marine Geology*, **162**, 1–38, [https://doi.org/10.1016/S0025-3227\(99\)00068-7](https://doi.org/10.1016/S0025-3227(99)00068-7)
- FIÚZA, A.F.G. 1984. *Hidrologia e dinamica das águas costeiras de Portugal*. PhD thesis, University of Lisbon.
- FIÚZA, A.F.G., HAMANN, M., AMBAR, I., DÍAZ DEL RÍO, G.D., GONZÁLEZ, N. & CABANAS, J.M. 1998. Water masses and their circulation off western Iberia during May 1993. *Deep Sea Research*, **45**, 1127–1160, [https://doi.org/10.1016/S0967-0637\(98\)00008-9](https://doi.org/10.1016/S0967-0637(98)00008-9)
- GARCÍA, M. 2002. *Caracterización Morfológica del Sistema de Canales y Valles Submarinos del Talud Medio del Golfo de Cádiz (SO de la Península Ibérica): Implicaciones Oceanográficas*. Degree thesis, University of Cádiz.
- GARCÍA, M., HERNÁNDEZ-MOLINA, F.J. ET AL. 2009. Contourite erosive features caused by the Mediterranean Outflow Water in the Gulf of Cadiz: Quaternary tectonic and oceanographic implications. *Marine Geology*, **257**, 24–40, <https://doi.org/10.1016/j.margeo.2008.10.009>
- GARCÍA, M., HERNÁNDEZ-MOLINA, F.J., ALONSO, B., VÁZQUEZ, J.T., ERCILLA, G., LLAVE, E. & CASAS, D. 2016. Erosive sub-circular depressions on the Guadalquivir Bank (Gulf of Cadiz): Interaction between bottom current, mass-wasting and tectonic processes. In: VAN ROOIJ, D., CALVIN CAMPBELL, D., RUEGGEBERG, A. & WÄHLIN, A. (eds) *The Contourite Log-Book: Significance for Palaeoceanography, Ecosystems and Slope Instability*. *Marine Geology*, **378**, 5–19, <https://doi.org/10.1016/j.margeo.2015.10.004>
- GARCÍA-MOJONERO, C. & MARTÍNEZ DEL OLMO, W. 2001. One sea level fall and four different gas plays: the Gulf of Cadiz Basin, SW Spain. In: FILLON, R.H. & ROSEN, N.C. (eds) *Petroleum Systems of Deep-Water Basins: Global and Gulf of Mexico Experience*. *Gulf Coast Section SEPM Foundation 21st Annual Bob F. Perkins Research Conference 2001. Program and Abstracts*. Gulf Coast Section SEPM (GCSSEPM), Houston, TX, 357–367.
- GASCARD, J.C. & RICHEZ, C. 1985. Water masses and circulation in the Western Alboran Sea and in the Straits of Gibraltar. *Progress in Oceanography*, **15**, 157–216, [https://doi.org/10.1016/0079-6611\(85\)90031-X](https://doi.org/10.1016/0079-6611(85)90031-X)
- GEBCO 2003. *One Minute Global Bathymetric Grid from the General Bathymetric Chart of the Oceans*, <http://www.gebco.net>
- GONTHIER, E.G., FAUGÈRES, J.C. & STOW, D.A.V. 1984. Contourite facies of the Faro Drift, Gulf of Cadiz. In: STOW, D.A.V. & PIPER, D.J.W. (eds) 1984. *Fine-Grained Sediments, Deep-Water Processes and Facies*. Geological Society, London, Special Publications, **15**, 275–292, <https://doi.org/10.1144/GSL.SP.1984.015.01.18>
- GONZÁLEZ-POLA, C. 2006. *Variabilidad climática en la región sureste del Golfo de Vizcaya*. Master's thesis, University of Oviedo.
- GRUETZNER, J. & UENZELMANN-NEBEN, G. 2016. Contourite drifts as indicators of Cenozoic bottom water intensity in the eastern Agulhas Ridge area, South Atlantic. In: VAN ROOIJ, D., CALVIN CAMPBELL, D., RUEGGEBERG, A. & WÄHLIN, A. (eds) *The Contourite Log-Book: Significance for Palaeoceanography, Ecosystems and Slope Instability*. *Marine Geology*, **378**, 350–360, <https://doi.org/10.1016/j.margeo.2015.12.003>
- GRÜNDLINGH, M. 1981. On the observation of a solitary event in the Mediterranean Outflow west of Gibraltar. *Meteor-Forschungsergebnisse A/B*, **23**, 15–46.
- HABGOOD, E.L. 2002. *Alongslope and Downslope Sediment Transport Processes in the Gulf of Cádiz*. PhD thesis, University of Southampton.
- HABGOOD, E.L., KENYON, N.H., MASSON, D.G., AKHMETZHANOV, A., WEAVER, P.P.E., GARDNER, J. & MULDER, T. 2003. Deep-water sediment wave fields, bottom current sand channels and gravity flow channel-lobe systems: Gulf of Cádiz, NE Atlantic. *Sedimentology*, **50**, 483–510, <https://doi.org/10.1046/j.1365-3091.2003.00561.x>
- HANEUBUTH, T.J.J., ZHANG, W., HOFMANN, A.L., LOEWEMARK, L.A. & SCHWENK, T. 2015. Oceanic density fronts steering bottom-current induced sedimentation deduced from a 50 ka contourite drift record and numerical modelling (off NW Spain). *Quaternary Science Reviews*, **112**, 207–225, <https://doi.org/10.1016/j.quascirev.2015.01.027>
- HANQUIEZ, V. 2006. *Processus sédimentaires et activité de la Veine d'Eau Méditerranéenne au cours du Quaternaire terminal dans le Golfe de Cadix*. Doctoral thesis, University of Bordeaux 1.

- HANQUIEZ, V., MULDER, T., LECROART, P., GONTHIER, E., MARCHÈS, E. & VOISSET, M. 2007. High resolution sea-floor images in the Gulf of Cadiz, Iberian margin. *Marine Geology*, **28**, 42–59, <https://doi.org/10.1016/j.margeo.2007.08.002>
- HAY, W.W. 2009. Cretaceous oceans and ocean modeling. In: HU, X., WANG, C., SCOTT, R.W., WAGREICH, M. & JANSÁ, L. (eds) *Cretaceous Oceanic Red Beds: Stratigraphy, Composition, Origins, and Paleocceanographic and Paleoclimatic Significance*. SEPM Special Publications, **91**, 243–271.
- HAYNES, R. & BARTON, E.D. 1990. A poleward flow along the Atlantic coast of the Iberian Peninsula. *Journal of Geophysical Research*, **95**, 11425–11441, <https://doi.org/10.1029/JC095iC07p11425>
- HEBURN, G.W., LA VIOLETTE, P.E. 1990. Variations in the structure of the anticyclonic gyres found in the Alboran Sea. *Journal of Geophysical Researches*, **95**, 1599–1613.
- HERNÁNDEZ-MOLINA, F.J., LLAVE, E. *ET AL.* 2003. Looking for clues to paleocceanographic imprints: a diagnosis of the gulf of Cadiz contourite depositional systems. *Geology*, **31**, 19–22, [https://doi.org/10.1130/0091-7613\(2003\)031<0019:LFCTPI>2.0.CO;2](https://doi.org/10.1130/0091-7613(2003)031<0019:LFCTPI>2.0.CO;2)
- HERNÁNDEZ-MOLINA, F.J., LLAVE, E. *ET AL.* 2006. The contourite depositional system of the Gulf of Cádiz: A sedimentary model related to the bottom current activity of the Mediterranean outflow water and its interaction with the continental margin. *Deep Sea Research II*, **53**, 1420–1463, <https://doi.org/10.1016/j.dsr2.2006.04.016>
- HERNÁNDEZ-MOLINA, F.J., LLAVE, E. & STOW, D.A.V. 2008a. Continental slope contourites. In: REBESCO, M. & CAMERLENGHI, A. (eds) *Contourites*. Developments in Sedimentology, **60**. Elsevier, Amsterdam, 379–408.
- HERNÁNDEZ-MOLINA, F.J., MALDONADO, A. & STOW, D.A.V. 2008b. Sediment drift of Abyssal plains and oceanic basins. In: REBESCO, M. & CAMERLENGHI, A. (eds) *Contourites*. Developments in Sedimentology, **60**. Elsevier, Amsterdam, 347–378.
- HERNÁNDEZ-MOLINA, F.J., SERRA, N., STOW, D.A.V., ERCILLA, G., LLAVE, E. & VAN ROOIJ, D. 2011. Along-slope oceanographic processes and sedimentary products around Iberia. In: HERNÁNDEZ-MOLINA, F.J., STOW, D.A.V. *ET AL.* (eds) *Deep Water Circulation: Processes and Products*. Geo-Marine Letters, **31**, 315–341.
- HERNÁNDEZ-MOLINA, F.J., STOW, D.A.V. & ALVAREZ-ZARIKIAN, C., EXPEDITION IODP 339 SCIENTISTS 2013. IODP Expedition 339 in the Gulf of Cadiz and off West Iberia: decoding the environmental significance of the Mediterranean Outflow Water and its global influence. *Scientific Drilling*, **16**, 1–11.
- HERNÁNDEZ-MOLINA, F.J., LLAVE, E. *ET AL.* 2014a. Contourite processes associated with the Mediterranean Outflow Water after its exit from the Strait of Gibraltar: Global and conceptual implications. *Geology*, **42**, 227–230, <https://doi.org/10.1130/G35083.1>
- HERNÁNDEZ-MOLINA, F.J., STOW, D.A.V., ALVAREZ-ZARIKIAN, C. & EXPEDITION IODP 339 SCIENTISTS 2014b. Onset of Mediterranean outflow into the North Atlantic. *Science*, **344**, 1244–1249, <https://doi.org/10.1126/science.1251306>
- HERNÁNDEZ-MOLINA, F.J., WÄHLIN, A. *ET AL.* 2015. Procesos oceanográficos y sus productos alrededor del margen de Iberia: Una nueva aproximación multidisciplinar. In: *Boletín Geológico y Minero*, **126**, 2–3, 279–326.
- HERNÁNDEZ-MOLINA, F.J., SIERRA, F.J. *ET AL.* 2016a. Evolution of the Gulf of Cadiz margin and southwest Portugal contourite depositional system: Tectonic, sedimentary and paleocceanographic implications from IODP expedition 339. *Marine Geology*, **377**, 7–39, <https://doi.org/10.1016/j.margeo.2015.09.013>
- HERNÁNDEZ-MOLINA, F.J., SOTO, M. *ET AL.* 2016b. A contourite depositional system along the Uruguayan continental margin: Sedimentary, oceanographic and paleocceanographic implications. In: VAN ROOIJ, D., CALVIN CAMPBELL, D., RUEGGEBERG, A. & WÄHLIN, A. (eds) *The Contourite Log-Book: Significance for Palaeoceanography, Ecosystems and Slope Instability*. *Marine Geology*, **378**, 333–349.
- HERNÁNDEZ-MOLINA, F.J., WÄHLIN, A. *ET AL.* 2016c. Oceanographic processes and products around the Iberian margin: a new multidisciplinary approach. In: VAN ROOIJ, D., CALVIN CAMPBELL, D., RUEGGEBERG, A. & WÄHLIN, A. (eds) *The Contourite Log-Book: Significance for Palaeoceanography, Ecosystems and Slope Instability*. *Marine Geology*, **378**, 127–156.
- HOWE, J.A., STOKER, M.S. & STOW, D.A.V. 1994. Late Cenozoic sediment drift complex, northeast Rockall trough, North Atlantic. *Paleoceanography and Paleoclimatology*, **9**, 989–999, <https://doi.org/10.1029/94PA01440>
- HUNEKE, N.V. & STOW, D. 2008. Identification of ancient contourites: problems and palaeoceanographic significance. In: REBESCO, M. & CAMERLENGHI, A. (eds) *Contourites*. Developments in Sedimentology, **60**. Elsevier, Amsterdam, 323–344.
- IGLESIAS, J. 2009. *Sedimentation on the Cantabrian Continental Margin from Late Oligocene to Quaternary*. PhD thesis, University of Vigo.
- IORGA, M. & LOZIER, M.S. 1999. Signatures of the Mediterranean outflow from a North Atlantic climatology. 1. Salinity and density fields. *Journal of Geophysical Research*, **194**, 25985–26029, <https://doi.org/10.1029/1999JC900115>
- JANÉ, G., LLAVE, E. *ET AL.* 2012. Contourite features along the northwestern Iberian continental margin and abyssal plain: the local influence of regional water masses in a down-slope dominate margin. In: *34th International Geological Congress (IGC)*, 5–10 August, Brisbane, Australia, CD-ROM.
- JUAN, C., ERCILLA, G. *ET AL.* 2012. Contourite sedimentation in the Alboran Sea: Plio-Quaternary evolution. *Geotemas*, **13**, 1817–1820.
- JUAN, C., ERCILLA, G. *ET AL.* 2013. Paleo-circulation patterns in the Alboran Sea inferred from the contourite register since the Messinian. In: *30th International Association of Sedimentologists Meeting of Sedimentology*, September 2013, Manchester, UK, Abstract Volume T3S4. International Association of Sedimentologists.
- JUAN, C., ERCILLA, G. *ET AL.* 2014. (Paleo) circulation models in the Alboran seas during the Pliocene and Quaternary. In: VAN ROOIJ, D. & RÜGGEBERG, A. (eds) *Book of Abstracts. 2nd Deep-Water Circulation Congress: The Contourite Log-Book, Ghent, Belgium, 10–12 September 2014*. Wilzz Special Publications, **69**, 91–92.

- JUAN, C., ERCILLA, G. ET AL. 2016. Current-controlled sedimentation in the Alboran Sea during the Pliocene and Quaternary. In: VAN ROOIJ, D., CALVIN CAMPBELL, D., RUEGGEBERG, A. & WÄHLIN, A. (eds) *The Contourite Log-Book: Significance for Palaeoceanography, Ecosystems and Slope Instability*. *Marine Geology*, **378**, 292–311, <https://doi.org/10.1016/j.margeo.2016.01.006>
- KELLING, G. & STANLEY, D.J. 1972. Sedimentary evidence of bottom current activity, Strait of Gibraltar region. *Marine Geology*, **13**, M51–M60, [https://doi.org/10.1016/0025-3227\(72\)90087-4](https://doi.org/10.1016/0025-3227(72)90087-4)
- KENYON, N.H. & BELDERSON, R.H. 1973. Bed forms of the Mediterranean undercurrent observed with side-scan sonar. *Sedimentary Geology*, **9**, 77–99, [https://doi.org/10.1016/0037-0738\(73\)90027-4](https://doi.org/10.1016/0037-0738(73)90027-4)
- KUIJPERS, A. & NIELSEN, T. 2016. Near-bottom current speed maxima in North Atlantic contourite environments inferred from current-induced bedforms and other seabed evidence. In: VAN ROOIJ, D., CALVIN CAMPBELL, D., RUEGGEBERG, A. & WÄHLIN, A. (eds) *The Contourite Log-Book: Significance for Palaeoceanography, Ecosystems and Slope Instability*. *Marine Geology*, **378**, 230–236, <https://doi.org/10.1016/j.margeo.2015.11.003>
- LACOMBE, H. & LIZERAY, J.C. 1959. Sur le régime des courants dans le Détroit de Gibraltar. *Comptes Rendus de l'Académie des Sciences de Paris*, **248**, 2502–2504.
- LE FLOCH, J. 1969. Evolution rapide de régime de circulation non permanents des couches d'eaux super-cielles dans le secteur sud-est du Golfe de Gascogne. *Cahiers Océanographiques*, **XXII**, 269–276.
- LLAVE, E. 2003. *Análisis morfosedimentario y estratigráfico de los depósitos contorníticos del Golfo de Cádiz: Implicaciones paleoceanográficas*. Doctoral thesis, University of Cádiz
- LLAVE, E., HERNÁNDEZ-MOLINA, F.J., SOMOZA, L., DÍAZ-DEL-RÍO, V., STOW, D.A.V., MAESTRO, A. & ALVEIRINHO DIAS, J.M. 2001. Seismic stacking pattern of the Faro-Albufeira contourite system (Gulf of Cadiz): A Quaternary record of paleoceanographic and tectonic influences. *Marine Geophysical Researches*, **22**, 487–508, <https://doi.org/10.1023/A:1016355801344>
- LLAVE, E., HERNÁNDEZ-MOLINA, F.J., SOMOZA, L., STOW, D.A.V. & DÍAZ-DEL-RÍO, V. 2005. The contourite depositional system in the Gulf of Cadiz: a unique Quaternary example of different drifts with reservoir potential characteristics. In: WENCESLAO, M.O. (ed.) *5 Aniversario de la Asociación de Geólogos y Geofísicos Españoles del Petróleo*, Asociación de Geólogos y Geofísicos Españoles del Petróleo. (ed) Aggep. W. Martínez del Olmo, 53–74.
- LLAVE, E., SCHÖNFELD, J., HERNÁNDEZ-MOLINA, F.J., MULDER, T., SOMOZA, L., DÍAZ DEL RÍO, V. & SÁNCHEZ-ALMAZO, I. 2006. High-resolution stratigraphy of the Mediterranean outflow contourite system in the Gulf of Cadiz during the late Pleistocene: The impact of Heinrich events. *Marine Geology*, **227**, 241–262, <https://doi.org/10.1016/j.margeo.2005.11.015>
- LLAVE, E., HERNÁNDEZ-MOLINA, F.J., SOMOZA, L., STOW, D. & DÍAZ DEL RÍO, V. 2007. Quaternary evolution of the contourite depositional system in the Gulf of Cadiz. In: VIANA, A. & REBESCO, M. (eds) 2007. *Economic and Palaeoceanographic Importance of Contourites*. Geological Society, London, Special Publications, **276**, 49–79, <https://doi.org/10.1144/GSL.SP.2007.276.01.03>
- LLAVE, E., JANÉ, G. ET AL. 2013. Sandy contourites along the continental margin of the northwestern Iberian Peninsula. In: *30th International Association of Sedimentologists Meeting of Sedimentology, September 2013, Manchester, UK, Abstract Volume T3S4*. International Association of Sedimentologists.
- LLAVE, E., HERNÁNDEZ-MOLINA, F.J. ET AL. 2015. Bottom current processes along the Iberian continental margin. In: MAESTRO, A., ERCILLA, G. & HERNÁNDEZ-MOLINA, F.J. (eds) *Procesos geológicos en el Margen Continental Ibérico*. *Boletín Geológico y Minero*, **126**, 219–256.
- LLAVE, E., JANÉ, G., MAESTRO, A., LÓPEZ-MARTÍNEZ, J., HERNÁNDEZ-MOLINA, F.J., MINK, S. 2018. Geomorphological and sedimentary processes of the glacially influenced northwestern Iberian margin and abyssal plains. *Geomorphology*, **312**, 60–85, <https://doi.org/10.1016/j.geomorph.2018.03.022>
- LOUARN, E. & MORIN, P. 2011. Antarctic Intermediate Water influence on Mediterranean Sea Water outflow. *Deep Sea Research Part I: Oceanographic Research Papers*, **58**, 932–942, <https://doi.org/10.1016/j.dsr.2011.05.009>
- LOZIER, S. & SINDLINGER, L. 2009. On the source of Mediterranean Overflow Water property changes. *Journal of Physical Oceanography*, **39**, 1800–1819, <https://doi.org/10.1175/2009JPO4109.1>
- LÜDMANN, T., WIGGERSHAUS, S., BETZLER, C. & HÜBSCHER, C. 2012. Southwest Mallorca Island: A cool-water carbonate margin dominated by drift deposition associated with giant mass wasting. *Marine Geology*, **289**, 1–15, <https://doi.org/10.1016/j.margeo.2011.09.008>
- MADELAIN, F. 1970. Influence de la topographie du fond sur l'écoulement méditerranéen entre le Détroit de Gibraltar et le Cap Saint-Vincent. *Cahiers Océanographiques*, **22**, 43–61.
- MAESTRO, A., LÓPEZ-MARTÍNEZ, J. ET AL. 2013. Morphology of the Iberian continental margin. *Geomorphology*, **196**, 13–35, <https://doi.org/10.1016/j.geomorph.2012.08.022>
- MALDONADO, A. 1979. Upper Cretaceous and Cenozoic depositional processes and facies in the distal North Atlantic continental margin off Portugal, DSDP Site 398. In: SIBUET, J.-C., RYAN, W.B.F. ET AL. (eds) *Initial Reports of the Deep Sea Drilling Project, Volume 47*. United States Government Printing Office, Washington, DC, 373–402.
- MAESTRO, A., BOHOYO, F. ET AL. 2015. Influencia de los procesos tectónicos y volcánicos en la morfología de los márgenes continentales ibéricos. *Boletín Geológico y Minero*, **126**, 427–482
- MARCHÈS, E., MULDER, T., CREMER, M., BONNEL, C., HANQUIEZ, V., GONTHIER, E. & LECROART, P. 2007. Contourite drift construction influenced by capture of Mediterranean Outflow Water deep-sea current by the Portimão submarine canyon (Gulf of Cadiz, South Portugal). *Marine Geology*, **242**, 247–260, <https://doi.org/10.1016/j.margeo.2007.03.013>

- MARCHÉS, E., MULDER, T., GONTHIER, E., CREMER, M., HAN-QUEIZ, V., GARLAN, T. & LECROART, P. 2010. Perched lobe formation in the Gulf of Cadiz: Interactions between gravity processes and contour currents (Algarve Margin, Southern Portugal). *Sedimentary Geology*, **229**, 81–94, <https://doi.org/10.1016/j.sedgeo.2009.03.008>
- MARTINS, C.S., HAMANN, M. & FUIZA, A.F.G. 2002. Surface circulation in the eastern North Atlantic from drifters and altimetry. *Journal of Geophysical Research*, **107**, 3217, <https://doi.org/10.1029/2000JC000345>
- MASSON, D.G., WYNN, R.B. & BETT, B.J. 2004. Sedimentary environment of the Faeroe–Shetland Channel and Faeroe Bank channels, NE Atlantic, and the use of bedforms as indicators of bottom current velocity in the deep ocean. *Sedimentology*, **51**, 1–35, <https://doi.org/10.1111/j.1365-3091.2004.00668.x>
- MAUFFRET, A. 1979. Etude géodynamique de la marge des Illes Baléares. *Mémoires de la Société Géologique de France*, **LVI**, 1–96.
- MAZÉ, J.P., ARHAN, M. & MERCIER, H. 1997. Volume budget of the eastern boundary layer off the Iberian Peninsula. *Deep Sea Research*, **44**, 1543–1574, [https://doi.org/10.1016/S0967-0637\(97\)00038-1](https://doi.org/10.1016/S0967-0637(97)00038-1)
- MCCARTNEY, M.S. 1992. Recirculating components to the deep boundary current of the northern North Atlantic. *Progress in Oceanography*, **29**, 283–383, [https://doi.org/10.1016/0079-6611\(92\)90006-L](https://doi.org/10.1016/0079-6611(92)90006-L)
- MCCARTNEY, M.S. & TALLEY, L.D. 1982. The Subpolar Mode Water of the North Atlantic Ocean. *Journal of Physical Oceanography*, **12**, 1169–1188, [https://doi.org/10.1175/1520-0485\(1982\)012<1169:TSMWOT>2.0.CO;2](https://doi.org/10.1175/1520-0485(1982)012<1169:TSMWOT>2.0.CO;2)
- MCCAVE, I.N., HALL, I.R. *ET AL.* 2001. Distribution, composition and flux of particulate material over the European margin at 47°–50° N. *Deep Sea Research I*, **48**, 3107–3139, [https://doi.org/10.1016/S0967-0645\(01\)00034-0](https://doi.org/10.1016/S0967-0645(01)00034-0)
- MÉLIÈRES, F., NESTEROFF, W.D. & LANCELOT, Y. 1970. Etude photographique des fonds du Golfe de Cadiz. *Cahiers Oceanographiques*, **22**, 63–72.
- MILKERT, D., ALONSO, B., LIU, L., ZHAO, X., COMAS, M. & DE KAENEL, E. 1996. Sedimentary facies and depositional history of the Iberia abyssal plain. In: WHITMARSH, R.B., SAWYER, D.S., KLAUS, A. & MASSON, D.G. (eds) *Proceedings of the Ocean Drilling Program Scientific Results, Volume 149*. Ocean Drilling Program, College Station, TX, 685–704.
- MILLOT, C. 1999. Circulation in the Western Mediterranean Sea. *Journal of Marine Systems*, **20**, 423–442, [https://doi.org/10.1016/S0924-7963\(98\)00078-5](https://doi.org/10.1016/S0924-7963(98)00078-5)
- MILLOT, C. 2009. Another description of the Mediterranean outflow. *Progress in Oceanography*, **82**, 101–124, <https://doi.org/10.1016/j.pocean.2009.04.016>
- MILLOT, C. 2014. Heterogeneities of in- and out-flows in the Mediterranean Sea. *Progress in Oceanography*, **120**, 254–278, <https://doi.org/10.1016/j.pocean.2013.09.007>
- MILLOT, C., CANDELA, J., FUDA, J.L. & TBER, Y. 2006. Large warming and salinification of the Mediterranean outflow due to changes in its composition. *Deep Sea Research I*, **53**, 656–666, <https://doi.org/10.1016/j.dsr.2005.12.017>
- MOUGENOT, D. 1989. *Geologia da Margem Portuguesa*. Instituto Hidrográfico, Lisbon.
- MULDER, T., LECROART, P. *ET AL.* 2002. Past deep-ocean circulation and the palaeoclimate record-Gulf of Cadiz. *EOS, Transactions of the American Geophysical Union*, **83**, 481–488, <https://doi.org/10.1029/2002EO000337>
- MULDER, T., VOISSET, M. *ET AL.* 2003. The Gulf of Cadiz: an unstable giant contouritic levee. *Geo-Marine Letters*, **23**, 7–18, <https://doi.org/10.1007/s00367-003-0119-0>
- MULDER, T., LECROART, P. *ET AL.* 2006. The western part of the Gulf of Cadiz: contour currents and turbidity currents interactions. *Geo-Marine Letters*, **26**, 31–41, <https://doi.org/10.1007/s00367-005-0013-z>
- MULDER, T., FAUGÈRES, J.C. & GONTHIER, E. 2008. Mixed turbidite–contourite systems. In: REBESCO, M. & CAMERLENGHI, A. (eds) *Contourites*. Developments in sedimentology, **60**. Elsevier, Amsterdam, 435–456.
- MULDER, T., HASSAN, R. *ET AL.* 2013. Contourites in the Gulf of Cadiz: a cautionary note on potentially ambiguous indicators of bottom current velocity. *Geo-Marine Letters*, **33**, 357–367, <https://doi.org/10.1007/s00367-013-0332-4>
- MUTTI, E. 1992. Turbidite Sandstones: San Donato. Milanese, Università di Parma, Agip, 275 p.
- MUTTI, E. & CARMINATTI, M. 2012. Deep-water sands of the Brazilian offshore basins. Search and Discovery Article 30219 presented at the American Association of Petroleum Geologists International Conference and Exhibition, October 23–26, 2011, Milan, Italy.
- MUTTI, E., BARROS, M., POSSATO, S. & RUMENOS, L. 1980. Deep-sea fan turbidite sediments winnowed by bottom-currents in the Eocene of the Campos Basin, Brazilian Offshore. In: *1st European Meeting of the International Association of Sedimentologists, Bochum, Abstracts*. International Association of Sedimentologists, 114.
- NATIONAL OCEANOGRAPHIC DATA CENTER 2012. *World Ocean Atlas 2012*. National Oceanographic Data Center, <http://www.nodc.noaa.gov/>
- NELSON, C.H., BARAZA, J. & MALDONADO, A. 1993. Mediterranean undercurrent sandy contourites, Gulf of Cadiz, Spain. *Sedimentary Geology*, **82**, 103–131, [https://doi.org/10.1016/0037-0738\(93\)90116-M](https://doi.org/10.1016/0037-0738(93)90116-M)
- NELSON, C.H., BARAZA, J., RODERO, J., MALDONADO, A., ESCUTIA, C. & BARBER, J.H., JR. 1999. Influence of the Atlantic inflow and Mediterranean outflow currents on Late Pleistocene and Holocene sedimentary facies of Gulf of Cadiz continental margin. *Marine Geology*, **155**, 99–129, [https://doi.org/10.1016/S0025-3227\(98\)00143-1](https://doi.org/10.1016/S0025-3227(98)00143-1)
- NEVES, M.C., TERRINHA, P., AFILHADO, A., MOULIN, M., MATIAS, L. & ROSAS, F. 2009. Response of a multi-domain continental margin to compression: Study from seismic reflection–refraction and numerical modelling in the Tagus Abyssal Plain. *Tectonophysics*, **468**, 113–130, <https://doi.org/10.1016/j.tecto.2008.05.008>
- NIELSEN, T., KUIPPERS, A. & KNUTZ, P. 2008. Seismic expression of contourite depositional systems. In: REBESCO, M. & CAMERLENGHI, A. (eds) *Contourites*. Developments in Sedimentology, **60**. Elsevier, Amsterdam, 301–322.

- OCHOA, J. & BRAY, N.A. 1991. Water mass exchange in the Gulf of Cadiz. *Deep Sea Research*, **38**, S465–S503, [https://doi.org/10.1016/S0198-0149\(12\)80021-5](https://doi.org/10.1016/S0198-0149(12)80021-5)
- PAILLET, J. & MERCIER, H. 1997. An inverse model of the eastern North Atlantic general circulation and thermocline ventilation. *Deep Sea Research*, **44**, 1293–1328, [https://doi.org/10.1016/S0967-0637\(97\)00019-8](https://doi.org/10.1016/S0967-0637(97)00019-8)
- PALOMINO, D., VÁZQUEZ, J.T., ERCILLA, G., ALONSO, B., LÓPEZ-GONZÁLEZ, N., DÍAZ DEL RÍO, V. & FERNÁNDEZ-SALAS, L.M. 2010. Influence of water masses on the seabed morphology around the Seamounds of the Motril Marginal Shelf (Alboran Sea, Western Mediterranean). *Geo-Temas*, **11**, 131–132.
- PALOMINO, D., VÁZQUEZ, J.T., ERCILLA, G., ALONSO, B., LÓPEZ-GONZÁLEZ, N., DÍAZ DEL RÍO, V. & FERNÁNDEZ-SALAS, L.M. 2011. Interaction between seabed morphology and water masses around the seamounds on the Motril Marginal Plateau (Alboran Sea, Western Mediterranean). *Geo-Marine Letters*, **31**, 465–479, <https://doi.org/10.1007/s00367-011-0246-y>
- PARRILLA, G. & KINDER, T.H. 1987. Oceanografía física del mar de Alborán. *Boletín Instituto Español de Oceanografía*, **4**, 133–165.
- PELIZ, A., DUBERT, J., SANTOS, A., OLIVEIRA, P. & LE CANN, B. 2005. Winter upper ocean circulation in the western Iberian Basin – fronts, eddies and poleward flows: An overview. *Deep Sea Research I*, **52**, 621–646, <https://doi.org/10.1016/j.dsr.2004.11.005>
- PEREIRA, R. & ALVES, T. 2011. Margin segmentation prior to continental break-up: A seismic-stratigraphic record of multiphased rifting in the North Atlantic (Southwest Iberia). *Tectonophysics*, **505**, 17–34, <https://doi.org/10.1016/j.tecto.2011.03.011>
- PÉREZ, F.F., CASTRO, C.G., ÁLVAREZ-SALGADO, X.A. & RÍOS, A.F. 2001. Coupling between the Iberian basin-scale circulation and the Portugal boundary current system. A chemical study. *Deep Sea Research I*, **48**, 1519–1533, [https://doi.org/10.1016/S0967-0637\(00\)00101-1](https://doi.org/10.1016/S0967-0637(00)00101-1)
- PERKINS, H., KINDERS, T. & VIOLETTE, P. 1990. The Atlantic inflowing the Western Alboran Sea. *Journal of Physical Oceanography*, **20**, 242–263, [https://doi.org/10.1175/1520-0485\(1990\)020<0242:TAITW>2.0.CO;2](https://doi.org/10.1175/1520-0485(1990)020<0242:TAITW>2.0.CO;2)
- PICKERING, K.T. & HISCOTT, R.N. 2016. *Deep Marine Systems. Processes, Deposits, Environments, Tectonics and Sedimentation*. John Wiley, Chichester, UK.
- PICKERING, K.T., HISCOTT, R.N. & HEIN, F.J. 1989. *Marine Environments. Clastic Sedimentation and Tectonics*. Unwin Hyman, London.
- PINGREE, R.D. & LE CANN, B. 1990. Structure, strength and seasonality of the slope currents in the Bay of Biscay region. *Journal of the Marine Biological Association of the United Kingdom*, **70**, 857–885, <https://doi.org/10.1017/S0025315400059117>
- POLLARD, R. & PU, S. 1985. Structure and circulation of the upper Atlantic Ocean northeast of the Azores. *Progress in Oceanography*, **14**, 443–462, [https://doi.org/10.1016/0079-6611\(85\)90022-9](https://doi.org/10.1016/0079-6611(85)90022-9)
- POSAMENTIER, H.W., KOLLA, V. 2003. Seismic geomorphology and stratigraphy of depositional elements in deep-water settings. *Journal of Sedimentary Research* **73**, 367–388.
- POTTER, R. & LOZIER, S. 2004. On the warming and salinification of the Mediterranean outflow waters in the North Atlantic. *Geophysical Research Letter*, **31**, L01202, <https://doi.org/10.1029/2003GL018161>
- REBESCO, M. 2005. Contourites. In: RICHARD, C., SELLEY, R.C., COCKS, L.R.M. & PLIMER, I.R. (eds) *Encyclopedia of Geology, Volume 4*. Elsevier, London, 513–527.
- REBESCO, M. & CAMERLENGHI, A. (eds). 2008. *Contourites. Developments in Sedimentology*, **60**. Elsevier, Amsterdam.
- REBESCO, M. & STOW, D.A.V. 2001. Seismic expression of contourites and related deposits: a preface. *Marine and Geophysical Research*, **22**, 303–308, <https://doi.org/10.1023/A:1016316913639>
- REBESCO, M., HERNÁNDEZ-MOLINA, F.J., VAN ROOIJ, D. & WAHLIN, A. 2014. Contourites and associated sediments controlled by deep-water circulation processes: State-of-the-art and future considerations. *Marine Geology*, **352**, 111–154, <https://doi.org/10.1016/j.margeo.2014.03.011>
- RIBÓ, M., PUIG, P., URGELES, R., VAN ROOIJ, D., MUÑOZ, A. 2016. Spatio-temporal evolution of sediment waves developed on the Gulf of Valencia margin (NW Mediterranean) during the Plio-Quaternary. In: VAN ROOIJ, D., CALVIN CAMPBELL, D., RUEGGERBERG, A. & WAHLIN, A. (eds) *The Contourite Log-Book: Significance for Palaeoceanography, Ecosystems and Slope Instability*. Marine Geology, **378**, 276–291, <https://doi.org/10.1016/j.margeo.2015.11.011>
- ROBINSON, A., LESLIE, W., THEOCHARIS, A. & LASCARATOS, A. 2001. Mediterranean Sea circulation. In: *Encyclopedia of Ocean Sciences*. Academic Press, London, 1689–1706.
- ROGERSON, M., ROHLING, E.J., WEAVER, P.P.E. & MURRAY, J.W. 2005. Glacial to interglacial changes in the settling depth of the Mediterranean outflow plume. *Paleoceanography and Paleoclimatology*, **20**, PA3007, <https://doi.org/10.1029/2004PA001106>
- ROGERSON, M., ROHLING, E.J., BIGG, G.R. & RAMÍREZ, J. 2012. Paleooceanography of the Atlantic-Mediterranean exchange: Overview and first quantitative assessment of climatic forcing. *Reviews of Geophysics*, **50**, RG2003, <https://doi.org/10.1029/2011RG000376>
- ROQUE, C., DUARTE, H. ET AL. 2012. Pliocene and Quaternary depositional model of the Algarve margin contourite drifts (Gulf of Cadiz, SW Iberia): seismic architecture, tectonic control and paleoceanographic insights. *Marine Geology*, **303–306**, 42–62, <https://doi.org/10.1016/j.margeo.2011.11.001>
- ROQUE, C., HERNÁNDEZ-MOLINA, F.J. ET AL. 2015. Slope failure and mass movements in the Sines Contourite Drift (West Portuguese Margin): preliminary results. In: DÍAZ DEL RÍO, V., BÁRCENAS, P. ET AL. (eds) *Volumen de Comunicaciones presentadas en el VIII Simposio sobre el Margen Ibérico Atlántico, MIA15*. Ediciones Sia Graf, Málaga, Spain, 579–582.
- SALAT, J. & CRUZADO, A. 1981. Masses d'eau dans la Méditerranée Occidentale. Mer Catalane et eaux adjacentes. *Rapports et Procès-verbaux des Réunions. Commission Internationale pour l'Exploration Scientifique de la Mer Méditerranée, CIESM*, **27**, 201–209.
- SANNINO, G., CARILLO, A. & ARTALE, V. 2007. Three-layer view of transports and hydraulics in the Strait of

- Gibraltar: A three-dimensional model study. *Journal of Geophysical Research*, **112**, C03010, <https://doi.org/10.1029/2006JC003717>
- SCHÖNFELD, J. & ZAHN, R. 2000. Late Glacial to Holocene history of the Mediterranean Outflow. Evidence from benthic foraminiferal assemblages and stable isotopes at the Portuguese margin. *Palaeogeography, Palaeoclimatology, Palaeoecology*, **159**, 85–111, [https://doi.org/10.1016/S0031-0182\(00\)00035-3](https://doi.org/10.1016/S0031-0182(00)00035-3)
- SERRA, N., AMBAR, I. & KÄSE, R. 2005. Numerical modelling of the Mediterranean Water splitting and eddy generation. *Deep Sea Research II*, **52**, 383–408, <https://doi.org/10.1016/j.dsr2.2004.05.025>
- SERRANO, A., MAESTRO, A. & NOZAL, F. (co-ords). 2005. *Memoria del mapa Geomorfológico de España a escala 1:1 000 000: Geomorfología de la zona submarina española*. Instituto Geológico y Minero de España (IGME), Madrid.
- SHANMUGAM, G. 2006. *Deep-Water Processes and Facies Models: Implications for Sandstone Petroleum Reservoirs*. Elsevier, Amsterdam.
- SHANMUGAM, G. 2008. Deep-water bottom currents and their deposits. In: REBESCO, M. & CAMERLENGHI, A. (eds) *Contourites*. Developments in Sedimentology, **60**. Elsevier, Amsterdam, 59–81.
- SHANMUGAM, G. 2012. New perspectives on deep-water sandstones: origin, recognition, initiation, and reservoir quality. *Handbook of Petroleum Exploration and Production 9*. Elsevier, Amsterdam, pp. 524.
- SHANMUGAM, G. 2013a. Modern internal waves and internal tides along oceanic pycnoclines: challenges and implications for ancient deep-marine baroclinic sands. *AAPG Bull.* **97**, 767–811.
- SHANMUGAM, G. 2013b. New perspectives on deep-water sandstones: implications. *Pet. Explor. Dev.* **40**, 316–324.
- SHANMUGAM, G., SPALDING, T.D. & ROFHEART, D.H. 1993. Processes sedimentology and reservoir quality of deep-marine bottom-current reworked sands (sandy contourites): An example from the Gulf of Mexico. *AAPG Bulletin*, **77**, 1241–1259.
- SHIPBOARD SCIENTIFIC PARTY 1998. Site 1067. In: WHITMARSH, R.B., BESLIER, M.-O. & WALLACE, P.J. (eds) *Proceedings of the Ocean Drilling Program Initial Reports, Volume 173*. Ocean Drilling Program, College Station, TX, 107–161.
- SIERRO, F.J., FLORES, J.A. ET AL. 1999. Messinian climatic oscillations, astronomic cyclicity and reef growth in the western Mediterranean. *Marine Geology*, **153**, 137–146, [https://doi.org/10.1016/S0025-3227\(98\)00085-1](https://doi.org/10.1016/S0025-3227(98)00085-1)
- SLATER, D.R. 2003. *The Transport of Mediterranean Water in the North Atlantic Ocean*. PhD thesis, University of Southampton.
- SOARES, D.M., ALVES, T.M. & TERRINHA, P. 2014. Contourite drifts on distal margins as indicators of established lithospheric breakup. *Earth and Planetary Science Letters*, **401**, 116–131, <https://doi.org/10.1016/j.epsl.2014.06.001>
- STANLEY, D.J., KELLING, G., VERA, J.A. & SLIENG, H. 1975. *Sands in the Alborán Sea: A Model of Input in a Deep Marine Basin*. Smithsonian Contributions to the Earth Sciences, **15**.
- STOKER, M.S., AKHURST, M.C., HOWE, J.A. & STOW, D.A.V. 1998. Sediment drifts and contourites on the continental margin off northwest Britain. *Sedimentary Geology*, **115**, 33–51, [https://doi.org/10.1016/S0037-0738\(97\)00086-9](https://doi.org/10.1016/S0037-0738(97)00086-9)
- STOW, D.A.V. & FAUGÈRES, J.-C. 2008. Contourite facies and the facies model. In: REBESCO, M. & CAMERLENGHI, A. (eds) *Contourites*. Developments in Sedimentology, **60**. Elsevier, Amsterdam, 223–256.
- STOW, D.A.V. & HOLBROOK, J.A. 1984. North Atlantic contourites: an overview. In: STOW, D.A.V. & PIPER, D.J.W. (eds) 1984. *Fine-Grained Sediments: Deep-Water Processes and Facies*. Geological Society, London, Special Publications, **15**, 245–256, <https://doi.org/10.1144/GSL.SP.1984.015.01.16>
- STOW, D.A.V. & MAYALL, M. 2000. Deep-water sedimentary systems: New models for the 21st century. *Marine and Petroleum Geology*, **17**, 125–135, [https://doi.org/10.1016/S0264-8172\(99\)00064-1](https://doi.org/10.1016/S0264-8172(99)00064-1)
- STOW, D.A.V., FAUGÈRES, J.-C. & GONTHIER, E. 1986. Facies distribution and textural variation in Faro Drift contourites: velocity fluctuation and drift growth. *Marine Geology*, **72**, 71–100, [https://doi.org/10.1016/0025-3227\(86\)90100-3](https://doi.org/10.1016/0025-3227(86)90100-3)
- STOW, D.A.V., FAUGÈRES, J.C., HOWE, J.A., PUDSEY, C.J. & VIANA, A. 2002a. Bottom currents, contourites and deep-sea sediment drifts: current state-of-the-art. In: STOW, D.A.V., PUDSEY, C.J., HOWE, J.A., FAUGÈRES, J.C., VIANA, A. (eds) 2002. *Deep-water Contourite Systems: Modern Drifts and Ancient Series, Seismic and Sedimentary Characteristics*. Geological Society, London, Memoirs, **22**, 7–20, <https://doi.org/10.1144/GSL.MEM.2002.022.01.02>
- STOW, D.A.V., FAUGÈRES, J.C. ET AL. 2002b. Faro-Albufeira drift complex, northern Gulf of Cadiz. In: STOW, D.A.V., PUDSEY, C.J., HOWE, J.A., FAUGÈRES, J.C., VIANA, A. (eds) 2002. *Deep-water Contourite Systems: Modern Drifts and Ancient Series, Seismic and Sedimentary Characteristics*. Geological Society, London, Memoirs, **22**, 137–154, <https://doi.org/10.1144/GSL.MEM.2002.022.01.11>
- STOW, D.A.V., PUDSEY, C.J., HOWE, J.A., FAUGÈRES, J.C., VIANA, A. (eds) 2002c. *Deep-water Contourite Systems: Modern Drifts and Ancient Series, Seismic and Sedimentary Characteristics*. Geological Society, London, Memoirs, **22**, <https://doi.org/10.1144/GSL.MEM.2002.022.01.32>
- STOW, D., BRACKENRIDGE, R. & HERNÁNDEZ-MOLINA, F.J. 2011a. Contourite sheet sands: New deepwater exploration target. Paper presented at the AAPG 2011 Annual Convention and Exhibition, Houston, Texas, 10–13 April, 2011.
- STOW, D.A.V., HERNÁNDEZ-MOLINA, F.J., HODELL, D. & ALVAREZ ZARIKIAN, C.A. 2011b. *Mediterranean Outflow: Environmental Significance of the Mediterranean Outflow Water and its Global Implications*. IODP Scientist Prospectus, Volume 339. Integrated Ocean Drilling Program Management International, Tokyo, <https://doi.org/10.2204/iodp.sp.339.2011>
- STOW, D.A.V., HERNÁNDEZ-MOLINA, F.J., ALVAREZ ZARIKIAN, C.A. & THE EXPEDITION 339 SCIENTISTS 2013a. *Proceedings of the Integrated Ocean Drilling Program, Volume 339*. Integrated Ocean Drilling Program

- Management International, Tokyo, <https://doi.org/10.2204/iodp.proc.339.2013>
- STOW, D.A.V., HERNÁNDEZ-MOLINA, F.J., LLAVE, E., GARCÍA, M., DÍAZ DEL RIO, V., SOMOZA, L. & BRUNO, M. 2013b. The Cadiz Contourite Channel: Sandy contourites, bedforms and dynamic current interaction. *Marine Geology*, **343**, 99–114, <https://doi.org/10.1016/j.margeo.2013.06.013>
- TOUCANNE, S., MULDER, T. ET AL. 2007. Contourites of the Gulf of Cadiz: A high-resolution record of the paleocirculation of the Mediterranean outflow water during the last 50 000 years. *Palaeogeography, Palaeoclimatology, Palaeoecology*, **246**, 354–366, <https://doi.org/10.1016/j.palaeo.2006.10.007>
- VALENCIA, V., FRANCO, J., BORJA, A. & FONTAN, A. 2004. Hydrography of the southeastern Bay of Biscay. In: BORJA, A. & COLLINS, M.B. (eds) *Oceanography and Marine Environment of the Basque Country*. Elsevier Oceanography Series, **70**. Elsevier, Amsterdam, 159–193.
- VAN AKEN, H.M. 2000. The hydrography of the mid-latitude Northeast Atlantic Ocean II: The intermediate water masses. *Deep Sea Research I*, **47**, 789–824, [https://doi.org/10.1016/S0967-0637\(99\)00112-0](https://doi.org/10.1016/S0967-0637(99)00112-0)
- VANDORPE, T., VAN ROOIJ, D., STOW, D.A.V. & HENRIET, J.-P. 2011. Pliocene to recent shallow-water contourite deposits on the shelf and shelf edge off south-western Mallorca, Spain. *Geo-Marine Letters*, **31**, 391–403, <https://doi.org/10.1007/s00367-011-0248-9>
- VANGRIESHEIM, A. & KHRIPOUNOFF, A. 1990. Near-bottom particle concentration and flux: temporal variations observed with sediment traps and nephelometer on the Meriadzek Terrace, Bay of Biscay. *Progress in Oceanography*, **24**, 103–116, [https://doi.org/10.1016/0079-6611\(90\)90023-U](https://doi.org/10.1016/0079-6611(90)90023-U)
- VANNEY, J.-R. & MOUGENOT, D. 1981. *La plate-forme continentale du Portugal et les provinces adjacentes: analyse geomorphologique*. Memórias dos Serviços Geológicos de Portugal, **28**.
- VAN ROOIJ, D., IGLESIAS, J. ET AL. 2010. The Le Danois Contourite Depositional System: Interactions between the Mediterranean Outflow Water and the upper Cantabrian slope (North Iberian margin). *Marine Geology*, **274**, 1–20, <https://doi.org/10.1016/j.margeo.2010.03.001>
- VARELA, R.A., ROSON, G., HERRERA, J.L., TORRES-LOPEZ, S. & FERNANDEZ-ROMERO, A. 2005. A general view of the hydrographic and dynamical patterns of the Rias Baixas adjacent sea area. *Journal of Marine Systems*, **54**, 97–113, <https://doi.org/10.1016/j.jmarsys.2004.07.006>
- VELASCO, J.P.B., BARAZA, J., CANALS, M. & BALÓN, J. 1996. La depresión periférica y el lomo contourítico de Menorca: evidencias de la actividad de corrientes de fondo al N del talud Balear. *Geogaceta*, **20**, 359–362.
- VIANA, A. 2008. Economic relevance of contourites. In: REBESCO, M. & CAMERLENGHI, A. (eds) *Contourites. Developments in Sedimentology*, **60**. Elsevier, Amsterdam, 493–510.
- VIANA, A. & REBESCO, M. (eds). 2007. *Economic and Palaeoceanographic Significance of Contourite Deposits*. Geological Society, London, Special Publications, **276**, <https://doi.org/10.1144/GSL.SP.2007.276.01.17>
- VIANA, A.R., FAUGÈRES, J.C. & STOW, D.A.V. 1998. Bottom current-controlled sand deposits – a review of modern shallow- to deep-water environments. *Sedimentary Geology*, **115**, 53–80, [https://doi.org/10.1016/S0037-0738\(97\)00087-0](https://doi.org/10.1016/S0037-0738(97)00087-0)
- VIANA, A.R., HERCOS, C.M., ALMEIDA, W., JR, MAGALHÃES, J.L.C. & ANDRADE, S.B. 2002. Evidence of bottom current influence on the Neogene to Quaternary sedimentation along the northern Campos Slope, SW Atlantic Margin. In: STOW, D.A.V., PUDSEY, C.J., HOWE, J.A., FAUGÈRES, J.C. & VIANA, A.R. (eds) 2002. *Deep-Water Contourite Systems: Modern Drifts and Ancient Series, Seismic and Sedimentary Characteristics*. Geological Society, London, Memoirs, **22**, 249–259, <https://doi.org/10.1144/GSL.MEM.2002.022.01.18>
- VIANA, A.R., ALMEIDA, W., JR, NUNES, M.C.V. & BULHÕES, E.M. 2007. The economic importance of contourites. In: VIANA, A.R. & REBESCO, M. (eds) 2007. *Economic and Palaeoceanographic Significance of Contourite Deposits*. Geological Society, London, Special Publications, **276**, 1–23, <https://doi.org/10.1144/GSL.SP.2007.276.01.01>
- VIÚDEZ, A., PINOT, J.M. & HANEY, R.L. 1998. On the upper layer circulation of the Alboran Sea. *Journal of Geophysical Research: Oceans*, **103**, 21653–21666, <https://doi.org/10.1029/98JC01082>
- VOELKER, A., LEBREIRO, S., SCHÖNFELD, J., CACHO, I., EXLENKENSER, H. & ABRANTES, F. 2006. Mediterranean outflow strengthenings during Northern Hemisphere Coolings: a salt sources for the glacial Atlantic? *Earth and Planetary Science Letters*, **245**, 39–55, <https://doi.org/10.1016/j.epsl.2006.03.014>
- WILSON, R.C.L., SAWYER, D.S., WHITMARSH, R.B., ZERONG, J. & CARBONELL, J. 1996. Seismic stratigraphy and tectonic history of the Iberia Abyssal Plain. In: WHITMARSH, R.B., SAWYER, D.S., KLAUS, A. & MASSON, D.G. (eds) *Proceedings of the Ocean Drilling Program Scientific Results, Volume 149*. Ocean Drilling Program, College Station, TX, 617–633.
- WILSON, R.C.L., MANATSCHAL, G. & WISE, S. 2001. Rifting along non-volcanic passive margins: stratigraphic and seismic evidence from the Mesozoic successions of the Alps and western Iberia. In: WILSON, R.C.L., WHITMARSH, R.B., TAYLOR, B. & FROITZHEIM, N. (eds) *Non-Volcanic Rifting of Continental Margins: A Comparison of Evidence from Land and Sea*. Geological Society, London, Special Publications, **187**, 429–452, <https://doi.org/10.1144/GSL.SP.2001.187.01.21>
- ZENK, W. 1975. On the Mediterranean outflow west of Gibraltar. *Meteor-Forschungsergebnisse*, **16**, 23–34.
- ZITELLINI, N., GRÀCIA, E. ET AL. 2009. The Quest for the Africa–Eurasia plate boundary west of the Strait of Gibraltar. *Earth and Planetary Science Letters*, **280**, 13–50, <https://doi.org/10.1016/j.epsl.2008.12.005>